

Harvard UltraFill

Ultra Gloss, Opalescent, High Performance

Composite for anterior and posterior restorations.



Pure esthetics in a new shine.

1. Multi Opacity layering technique for specialists

Perfect esthetic results with Harvard UltraFill Multi Opacity.

With this opalescent high performance composite it is possible to create a perfect solution for challenging restorations.

This concept offers a huge variety of Vita®- and special shades.

(Layers of dentin, enamel, incisal and more translucent shades).



Multi Opacity layering technique for specialists



Dentin Opacity



Enamel Opacity



Transpa Opacity



Easy and efficient.

2. Universal Opacity

Easy layering with Harvard UltraFill Universal,
High performance results in less time.

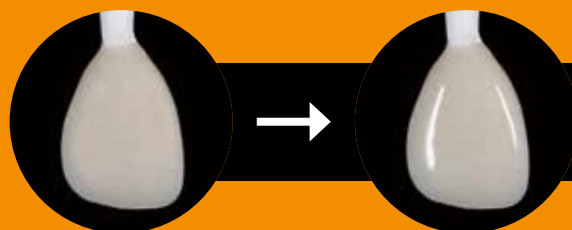
(Easy technique – medium opacity).

2
different
concepts of
opacity



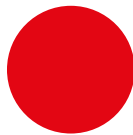
Universal Opacity

or



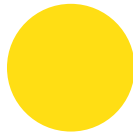
Universal Opacity

Intuitive color identification.



Dentin Opacity

Dentin shades for multi opacity layering technique.



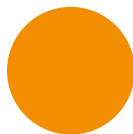
Enamel Opacity

Enamel shades for multi opacity layering technique.



Transpa Opacity

Incisial INC or other translucent shades T or TX shades for multi opacity layering technique.



Universal Opacity

Shades with a medium opacity, for easy layering technique.

A new high performance composite with excellent properties

- Superior handling properties
- Easy to work with
- Easy polishability, permanent high gloss
- Opalescence, tooth-like fluorescence, cameleon effect
- Very good radiopacity
- Low polymerization shrinkage
- High abrasion resistance
- Optimal physical properties
- Inorganic filler smaller than 0,2 μm
- Available in a new 3 g syringe and in OptiTips®



2

different
concepts of
opacity

Harvard UltraFill

concept of opacity.

Overview:



ea. 3 g



Trial Kit S



Core Kit



Complementary Kit



ea. 0.25 g



Harvard Applier OptiTips®



3 g



0.25 g



IntroKit S



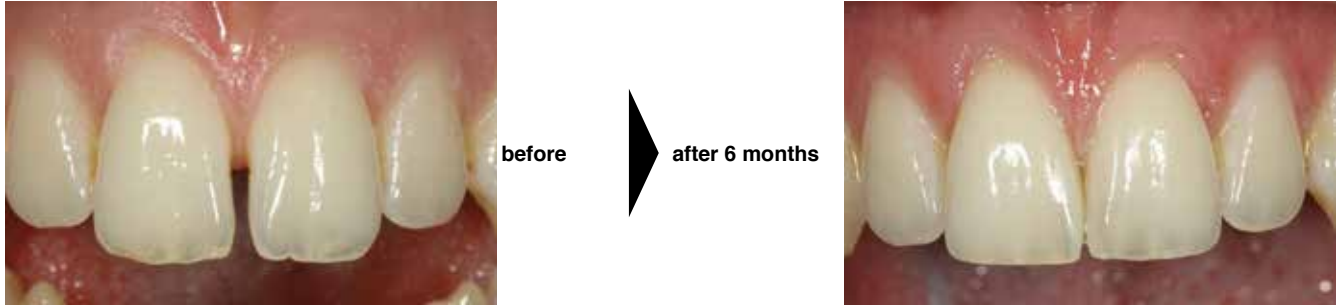
IntroKit C

Beautiful high gloss even after months.

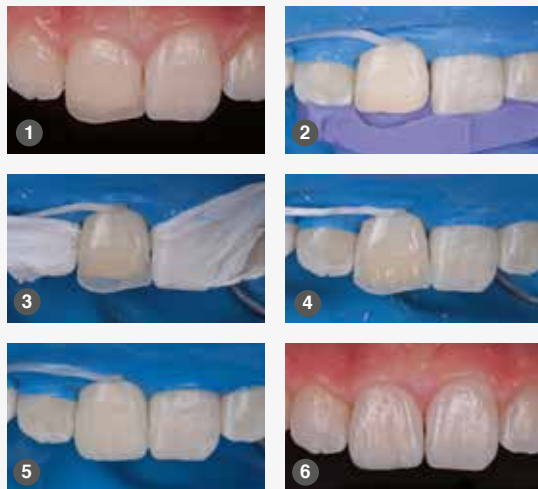


Perfect esthetic results with the Multi Opacity layering technique.

Closing a diastema, Dentist MSc. Andreas Kluschke



Class IV restoration incisor 11: For this challenging case, I decided to use Harvard UltraFill



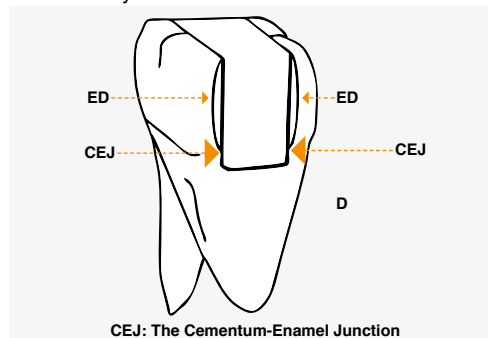
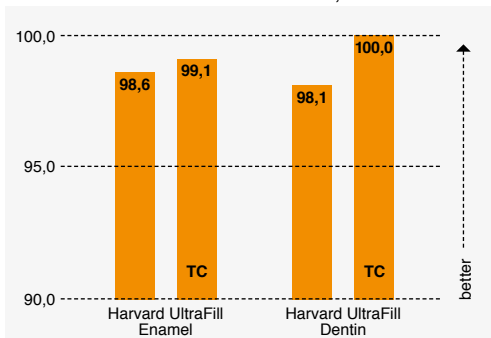
1. Initial situation anterior fracture
2. Removing the old composite, silicone impression
3. As a basis for the palatinal restoration a shell was modeled.
4. Mamelons were worked up with dentin composite. (90% opacity – Harvard UltraFill A1 D)
5. Final layering on mamelons with enamel opacity (80% opacity – Harvard UltraFill A1 E) and an incisal edge of Harvard UltraFill INC
6. After anatomical 3D correction



Dr. Pawel Paszkiewicz,
Estetique Clinic,
Polanica Stroj, Poland

Perfect marginal seal before and after loading in the chewing simulator and thermocycling TC

Harvard InterLock/Harvard UltraFill, Prof. Kunzelmann, LM university Munich





Simple, fast and shiny.

High performance gloss finish with Harvard UltraFill Universal Opacity.

Class V restoration, Dentist MSc Andreas Kluschke



before



after 6 months



Perfect margin.

Class I restoration, Dr. Pawel Paszkiewicz



before



after



HARVARD RECOMMENDATION

Harvard UltraFill Flow

Ultra Gloss, Opalescent, Flowable Composite for **anterior** and **posterior** restorations

- Easy polishability, permanent high gloss
- Opalescence
- Optimal flow consistency
- Thixotropic
- Tooth-like fluorescence
- Reduced polymerization shrinkage
- High abrasion resistance
- Optimal physical properties
- Easy to work with
- Cameleon effect

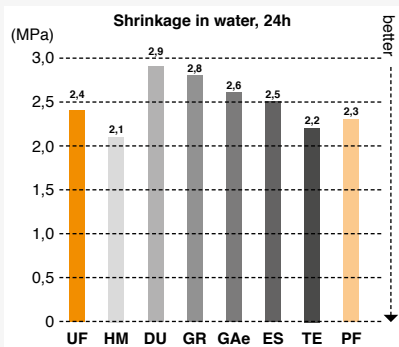
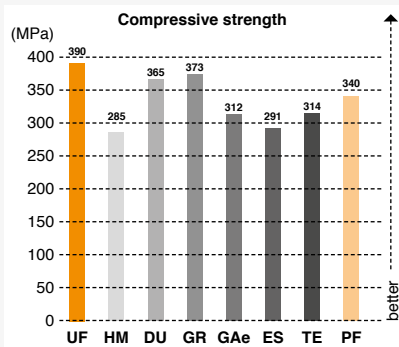
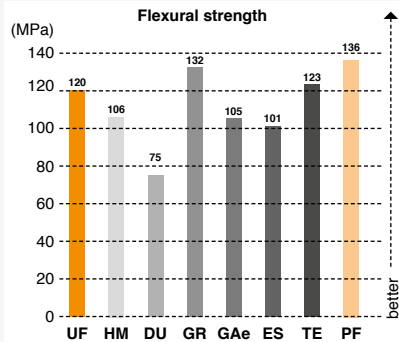
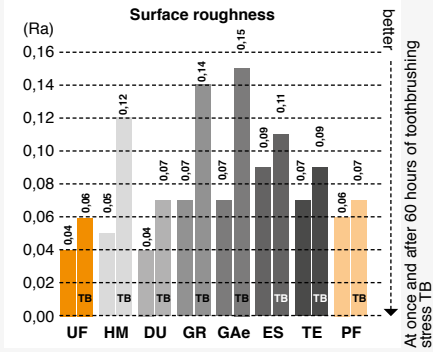
- Available in ComforTip® F

Harvard InterLock® ONE Universal Adhesive



- Suitable for all tooth conditioning techniques: with or without etching gel, wet or dry
- Convenient and precise application with the triangle ergonomic bottle with defined drop size

Physical Properties



- UF ■ Harvard UltraFill
- HM ■ Heliomolar
- DU ■ Durafill VS
- GR ■ Gradia Anterior
- GAe ■ G-aenial Anterior
- ES ■ Esthet-X HD
- TE ■ Tetric EvoCeram
- PF ■ Harvard PremiumFill ⁺



HARVARD®

Marke und Qualität seit 1892

Harvard Dental International GmbH
 Margaretenstr. 2 - 4, 15366 Hoppegarten, Germany
 Phone: + 49 (0) 30/99 28 978-0
 Fax: + 49 (0) 30/99 28 978-19
 info@harvard-dental-international.de

Article information

Multi Opacity Refills

	Order no. 3 g syringe	Order no. 20 x 0.25 g OptiTips®
Shade A1 E	7131111	7131211
Shade A1 D	7121111	7121211
Shade A2 E	7131112	7131212
Shade A2 D	7121112	7121212
Shade A3 E	7131113	7131213
Shade A3 D	7121113	7121213
Shade A3.5 E	7131114	7131214
Shade A3.5 D	7121114	7121214
Shade B1 E	7131121	
Shade B1 D	7121121	
Shade B2 E	7131122	
Shade B2 D	7121122	
Shade C2 E	7131132	
Shade C2 D	7121132	
Shade A4 E	7131115	
Shade B3 E	7131123	
Shade C3 E	7131133	
Shade INT D	7121140	
Shade BL E	7131153	
Shade BL 0.5 (E)	7111150	
Shade BL D	7121152	
Shade BL U	7111151	
Shade INC	7141160	
Shade T	7141170	
Shade TX	7141180	

Multi Opacity Kits

Harvard UltraFill „Multi Opacity“ Core Kit 14 syringes ea. 3 g, in the shades A1 E, A2 E, A3 E, A3.5 E, B1 E, B2 E, C2 E A1 D, A2 D, A3 D, A3.5 D, B1 D, B2 D, C2 D	7186101
Harvard UltraFill „Multi Opacity“ Complementary Kit 10 syringes à 3 g, in the shades A4 E, B3 E, C3 E, BL 0.5 (E), BL E, T, TX, INT D, BL D, INC	7186102
Harvard UltraFill „Multi Opacity“ Trial Kit S 3 syringes ea. 3 g, in the shades INC, A2 E, A2 D	7176104

Universal Opacity Refills

	Order no. 3 g syringe	Order no. 20 x 0.25 g OptiTips®
Shade A1 U	7111111	7111211
Shade A2 U	7111112	7111212
Shade A3 U	7111113	7111213
Shade A3.5 U	7111114	7111214
Shade B2 U	7111122	7111222
Shade C2 U	7111132	7111232
Shade D3 U	7111143	
Shade BL U	7111151	

Universal Opacity Kits

Harvard UltraFill „Universal Opacity“ IntroKit S 3 syringes ea. 3 g, in the shades A2 U, A3 U, A3.5 U	7175100
Harvard UltraFill „Universal Opacity“ IntroKit C 3 x 20 OptiTips® ea. 0.25 g, in the shades A2 U, A3 U, A3.5 U	7175200
Harvard Applier OptiTips®	7095200

Liability is excluded for all printing errors and omissions. Before using our Harvard products, the respective directions for use should be noticed in every case. All measurements are internal measurements of Harvard Dental International.

Harvard Distribution Partner.