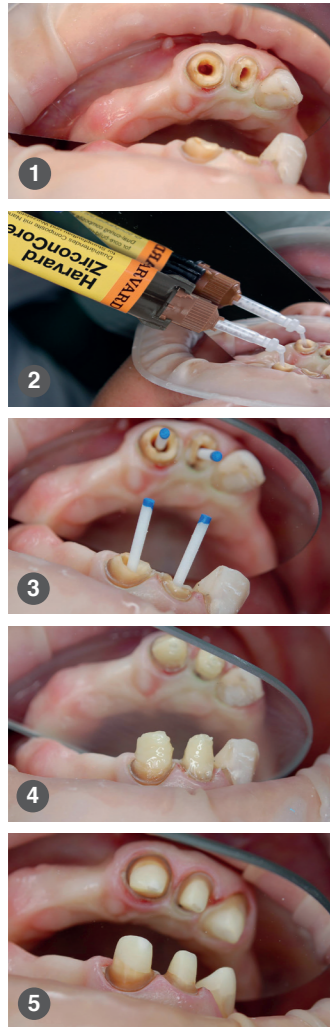
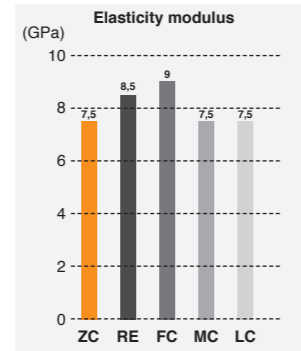


## Post cementation & core build-up.

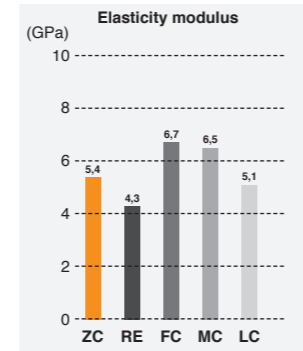


1. Prepared and bonded root canal
2. Application into the root canal
3. Placement of the post
4. Light cured core build-up
5. Shaped core build-up

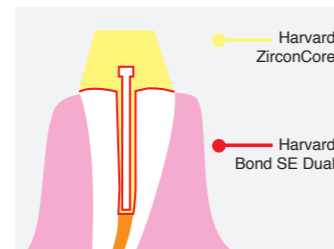
## Physical Properties.



ZC Harvard ZirconCore  
RE Voco Reblida  
FC Dentsply FluoroCore 2+



MC Ivoclar Vivadent MultiCore Flow  
LC DMG LuxaCore Z Dual Automix



Excellent mechanical properties in all curing modes.

### Technical data

Working time (23 °C / 73 °F)	1:30 min
Setting time (self cure)	3:30 min
Light cure (optional)	40 sec

## Grinding without grooves.



- Excellent consistencies for both indications: **post cementation and core build-up**
- Optimal thixotropic properties
- Optimal hardness: "Cuts like dentin". Avoids grooves from circular grinding
- Very good mechanical properties for permanent restorations
- Contains a substantial amount of Nano-zirconia
- Dual-curing
- Fluoride release
- Very good radiopacity
- Self-mixing material with the Minimix syringe
- For optimal results use **Harvard ZirconCore** with the adhesive **Harvard Bond SE Dual**

### Article information

	Order no.
<b>Harvard ZirconCore</b> 5 ml minimix syringe, 10 mixing tips, 10 intra tips long, Shade A3	7083600
<b>Harvard Mini 1:1 O-Brown</b> refill bag with 50 mixing tips	7083610
<b>Harvard IntraTips long</b> refill bag with 50 intra tips long	7083620
<b>Harvard Bond SE Dual</b> 2 x 5 ml bottle, 50 Microbrush®, 5 mixing wells	7083602
<b>Harvard Bond SE Dual Refill</b> 2 x 5 ml bottle	7083605



We recommend **Harvard Bond SE Dual**: the dual cure, self etch adhesive

**HARVARD®**  
Marke und Qualität seit 1892

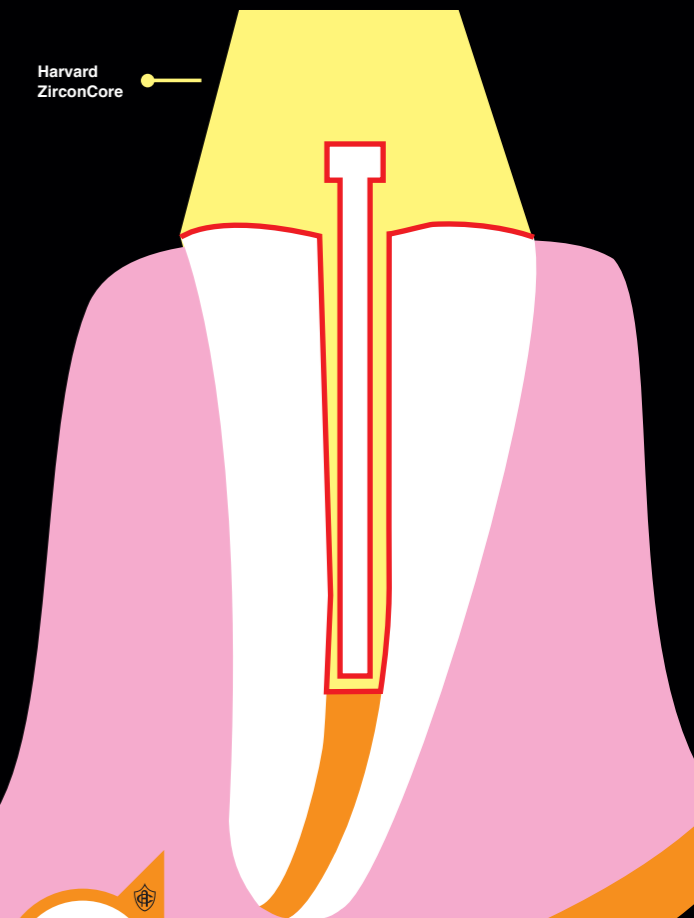
Harvard Dental International GmbH  
Margaretenstr. 2 - 4, 15366 Hoppegarten, Germany  
Phone: + 49 (0) 30/99 28 978-0  
Fax: + 49 (0) 30/99 28 978-19  
info@harvard-dental-international.de

11016\_EN\_02/19

**HARVARD®**

## Harvard ZirconCore

Dual cure composite with nano zirconium dioxide. For core build-up and post cementation.



Please rate this product.\*

EN

## 1. Light Cure Composites, Bondings and Liner



Harvard UltraFill

Harvard PremiumFill

Harvard UltraFill Flow

Harvard PremiumFlow

Harvard Inter-Lock® ONE Universal Adhesive

Harvard Inter-Lock®

Harvard Bond SE Mono

Harvard IonoLine

Harvard Restore

Harvard RestoreFlow

Harvard Self-Bond

Harvard Bond TE Mono

Harvard Etch

Harvard CalciumHydroxide LC

Harvard Bond SE Dual

Harvard LuteCem SE



Harvard ZirconCore



Harvard InterLock® ONE Self Cure Activator



Harvard MTA XR Flow EWT OptiCaps® & EndoDirect syringe



Harvard MTA XR Flow Fast OptiCaps®

## 2. Dual Cure Core Build-Up and Post Cementing



Harvard ZirconCore



Harvard InterLock® ONE Self Cure Activator



Harvard MTA XR Flow EWT OptiCaps® & EndoDirect syringe



Harvard MTA XR Flow Fast OptiCaps®

## 3. Endodontics, MTA



Harvard MTA XR Flow Fast OptiCaps®



Harvard MTA XR Flow EWT OptiCaps® & EndoDirect syringe



Harvard MTA XR Flow Fast OptiCaps®



Harvard MTA (Universal) OptiCaps®



Harvard MTA (Universal) HandMix



Harvard Calcium Hydroxide



Harvard TEMP C&B



Harvard TEMP Glaze LC



Harvard TEMP Cem



Harvard TEMP Cem EasyDose®

## 4. Temporary Materials



Harvard TEMP C&B Pro



Harvard TEMP Cem



Harvard TEMP Cem Esthetic



Harvard TEMP Cem EasyDose®



Harvard Phosphat Cement



Harvard Polycarboxylat Cement



Harvard Cement OptiCaps®



Harvard Implant Semi-Permanent

## 5.1 Zinc Oxide Luting Cements



Harvard Zinc Oxide Luting Cements



Harvard Zinc Oxide Luting Cements



Harvard Zinc Oxide Luting Cements



Harvard Zinc Oxide Luting Cements

## 5.2 Glass Ionomer Cements for Restorations



Harvard Ionoglas Fill Extra



Harvard Ionoglas Fill Extra



Harvard Ionoglas Fill Extra



Harvard Ionoglas Fill Extra

## 5.3 Glass Ionomer Cements for Luting



Harvard Ionoglas Fill Extra



Harvard Ionoglas Fill Extra



Harvard Ionoglas Fill Extra



Harvard Ionoglas Fill Extra



Harvard Bite



Harvard TransMatrix



Harvard PremiumSII MaxMix Putty Soft/Heavy Fast



Harvard PremiumSII Putty Soft/Fast

## 6. Bite Registration and Impression Materials



Harvard Bite



Harvard TransMatrix



Harvard PremiumSII MaxMix Putty Soft/Heavy Fast



Harvard PremiumSII Putty Soft/Fast



Harvard PremiumSII Light



Harvard PremiumSII Medium



Harvard PremiumSII Heavy



Harvard PremiumSII Heavy

Harvard PremiumSII Light/Light Fast, Medium/Medium Fast, Mono/Mono Fast, Heavy/Heavy Fast



Harvard TraySive



Please rate this product.\*

\*Great that you have tested our product. Did it meet your satisfaction? Your opinion is very important to us; please use the QR code or our website [www.harvard-dental.de/feedback](http://www.harvard-dental.de/feedback) to provide us with your much valued feedback. Product tests are worth it. As a gesture of thanks we will send you another product sample from our range. Thank you for your time.

Harvard TraySive