

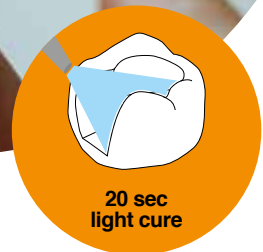


## Harvard Bond SE Mono

### Self-etch light cure bonding: etching, priming and bonding in one step

- **Only one layer necessary**  
Fast and convenient
- Strong and long-lasting adhesion to enamel and dentin
- **Optimal flow properties**  
Excellent wetting and sealing characteristics
- Low risk of postoperative sensitivity
- **Easy to use**  
Safe application and highly reproducible results

1 component, 1 layer, 1 minute!

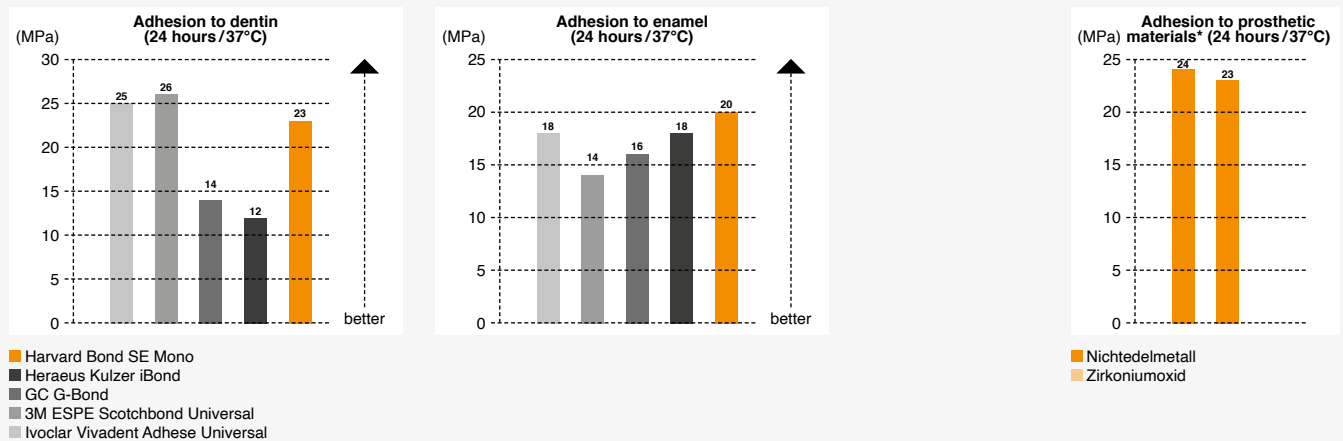


# Harvard Bond SE Mono

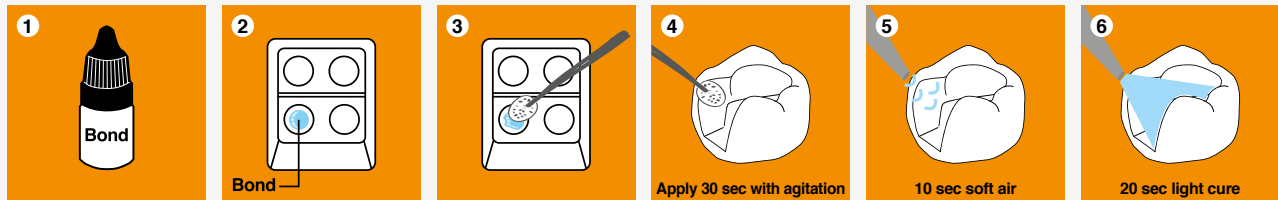
## protects against postoperative sensitivity.

### Technical values:

Solid physical values underpin **Harvard Bond SE Mono**.



## Application



### Benefits:

- Strong and long-lasting adhesion to enamel and dentin
- Only one layer necessary
- Hydrophilic for wet bonding technique
- Good price / performance ratio



### Order information:

<b>Harvard Bond SE Mono</b>		<b>Microbrush®</b>	7095156
5 ml bottle	7083601	refill bag with 50 applicators	

Harvard Distribution Partner.



## HARVARD®

Marke und Qualität seit 1892

Harvard Dental International GmbH  
 Margaretenstr. 2 - 4, 15366 Hoppegarten, Germany  
 Phone: + 49 (0) 30/99 28 978-0  
 Fax: + 49 (0) 30/99 28 978-19  
 info@harvard-dental-international.de



[www.harvard-dental.de](http://www.harvard-dental.de)