



HARVARD®

Test us!

**Dental
diversity
that
inspires.**

*Much more
than you
expect.*

▲ Restoratives
● Endodontics
■ Prosthetics




Made in Germany

2026

EN


Harvard
POWERmer Bulk



On Step, Self Adhesive
Easy & Fast
Composite-Hybrid

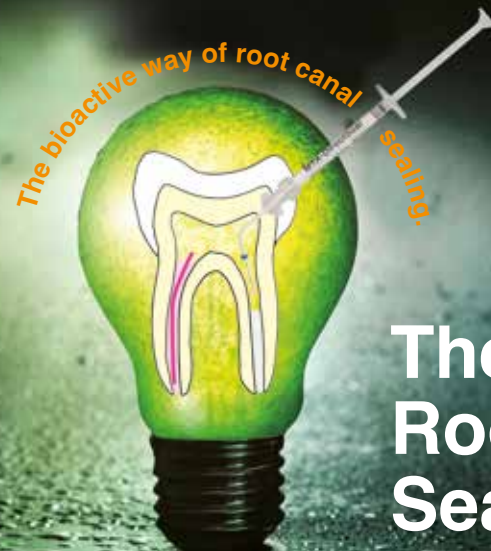
28

Harvard
BioPOWER Dentine



The **BIOACTIVE**
DENTINE
Substitute

30




The bioactive way of root canal
sealing.

50


**The 3 Bioactive
Root Canal
Sealers.**

Harvard
BioCal® - Line
22

Harvard
BioCal® - CAP
36




Harvard
POWERmer Cem
74



Harvard
BioPOWER Cem

Harvard
BioPhosphate Cem

Harvard
VeneerCem



72

Harvard
ClearMatrix



**EXTRA
CLEAR**

83



Restoratives

Filling Composites

Harvard MultiChrome	8
Harvard MultiChrome Flow	12
Harvard UltraFill	14
Harvard UltraFill Flow	16
Harvard PremiumFill	17
Harvard PremiumFlow	18
Harvard Restore	19
Harvard RestoreFlow	19
Harvard IonoSphere Bulk Flow	20

Liners

Harvard BioCal®-Line	22
Harvard CalciumHydroxide LC	25
Harvard IonoLine	25

Light Cure Adhesives

Harvard InterLock® ONE Universal Adhesive	26
Harvard InterLock®	26
Harvard Bond SE Mono	27
Harvard Self-Bond	27
Harvard Bond TE Mono	27
Harvard Etch	27

Filling Cements

Harvard POWERmer Bulk (Amalgam Alternative)	28
Harvard BioPOWER Dentine	30
Harvard BioPhosphate Dentine (Resin-free)	32
Harvard IonoGlas Fill Extra (Resin-free)	34
Harvard IonoResin Fill Extra	35

Pulp Protection

Harvard BioCal®-CAP	36
Harvard MTA-CAP	38
Harvard CalciumHydroxide	38
Harvard MTA-PT	39

Endodontics

Root Canal MTA Universal

Harvard MTA Universal OptiCaps®	45
Harvard MTA Universal HandMix	45

Root Canal MTA Specialities

Harvard MTA-Repair	47
Harvard MTA-Ortho	47
Harvard MTA-Retro	48

Root Canal-Preparation & -Dressing

Harvard Glide & Clean	49
Harvard RootTemp	49

Root Canal Sealers

Harvard MTA-DirectSeal	52
Harvard MTA-RootSeal	54
Harvard BioCal®-RootSeal	56

Prosthetics

Impression Materials

Harvard SuperSnap®	60
Harvard PremiumSil	62

Retraction Material

Harvard LiquiCord®	64
--------------------	----

Bite Registration Material

Harvard Bite	65
--------------	----

Core Build-Up & Post Cementation

Harvard ZirconCore (Composite)	66
Harvard Bond SE Dual	67

Temporary Crown & Bridge Materials

Harvard TEMP C&B Ultra	68
Harvard TEMP C&B	69
Harvard TEMP C&B Pro	69

Temporary Luting Cements

Harvard TEMP Cem	70
Harvard TEMP Cem EasyDose®	70
Harvard TEMP Cem Esthetic	71

Semi-Permanent Luting Composite

Harvard Implant Semi-permanent	71
--------------------------------	----

Permanent Luting Composites

Harvard LuteCem SE	72
Harvard VeneerCem	72

Permanent Luting Cements

Harvard POWERmer Cem	75
Harvard BioPOWER Cem	76
Harvard BioPhosphate Cem (Resin-free)	77
Harvard IonoResin Cem Extra	78
Harvard IonoResin Cem	78
Harvard IonoGlas Cem Extra (Resin-free)	79
Harvard IonoGlas Cem (Resin-free)	79
Harvard Cement. The Original. Since 1892.	80
Harvard Polycarboxylat Cement	81

Transparent Matrix Materials

Harvard TransMatrix	82
Harvard ClearMatrix	83

Miscellaneous

Accessories

	84
--	----

Mixing Advices

	86
--	----

Our experts

Your opinion counts – because it is YOU who makes the difference!
In the daily practice routine, you always have to be up to date.
Our experts have created specialized information on the Harvard products.
And it is really helpful ...



Would you also like to become a Harvard expert?
Get in touch with us.



Dentist Dr. Basel Hour
Damascus, Syria

Specialist area:
Restoratives



Dentist MSc. Andreas Kluschke
Gelting, Germany

Specialist area:
Restoratives



Dr. Pawel Paszkiewicz
Estetique Clinic,
Polanica Zdroj, Poland

Specialist area:
Restoratives



Amir Ibrik D.D.S, N.D.B, E.R.B, MSc
Scientific Affairs,
Elmshorn, Germany

Specialist area:
Restoratives, Endodontics, Prosthetics



Prof. Angelo Itri
Genoa, Italy

Specialist area:
Endodontics



Dentist Dr. med. Klaus Herrligkoffer
Berlin, Germany

Specialist area:
Endodontics



Dentist Dr. Nihad Hababat
Dubai, United Arab Emirates

Specialist area:
Endodontics



Dentist Dr. Oxana Hilfer
Fulda, Germany

Specialist area:
Endodontics, Prosthetics



PD Dr. Johannes Ebert
University of Erlangen, Germany

Specialist area:
Endodontics



Dr. med. dent. Maximilian Donges
Hamburg Smile,
Hamburg, Germany

Specialist area:
Endodontics



Kay Zischow
Zischow Dental Hamburg GmbH,
Hamburg, Germany

Specialist area:
Prosthetics



Dr. Mohammed Saqqal
Dentex Clinic,
Riadh, Saudi Arabia

Specialist area:
Prosthetics



HARVARD

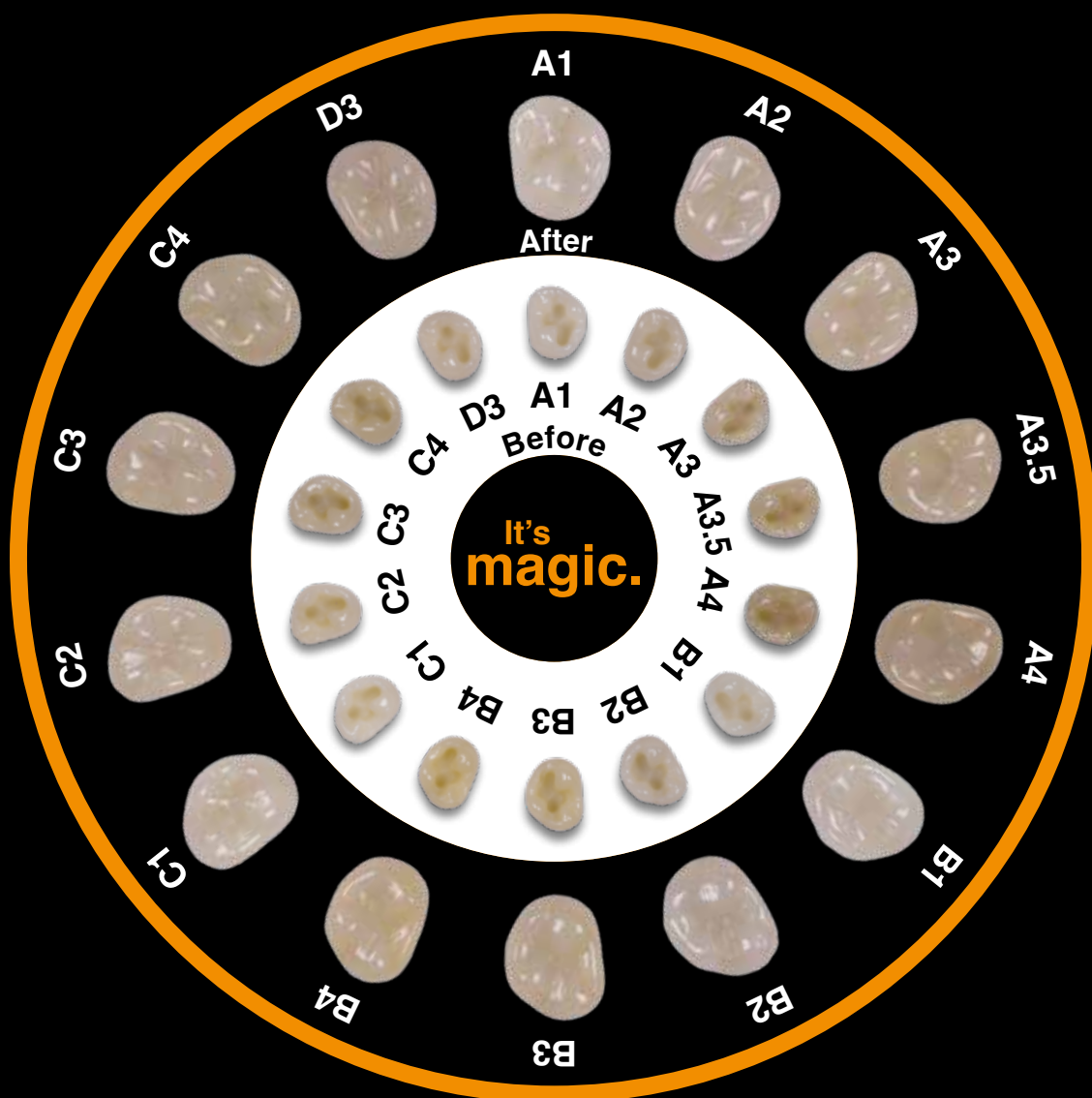
RESTORATIVES

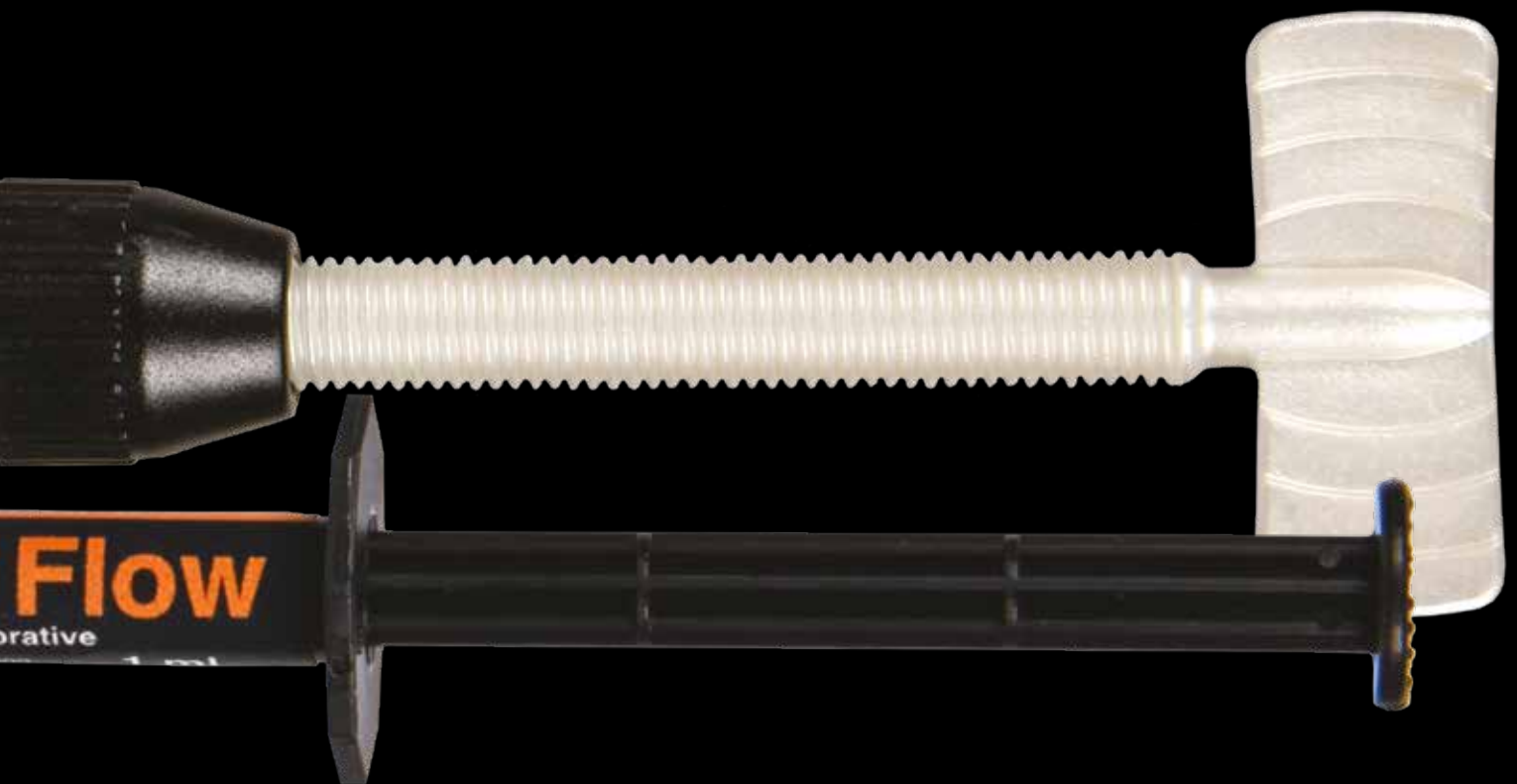
A large selection of composite restoratives, cavity liners, adhesives and filling cements in classic or resin reinforced versions makes up the comprehensive Harvard range in the area of restoration.

- >> **Filling Composites**
- >> **Liners**
- >> **Light Cure Adhesives**
- >> **Filling Cements**
- >> **Pulp Protection**

Pictures from practice
1.: Harvard Block 'n Mask and then Harvard MultiChrome
2.: Perfect marginal fit with Harvard UltraFill Universal Opacity
3.: Cavity lining with Harvard BioCal®-Line
4.: Harvard BioCal®-CAP on the exposed pulp







Harvard MultiChrome It's magic.

**Shade-adaptive
composite for almost all
tooth shades.**

- >> Hyper-Nano technology, spherical fillers
- >> Without any color pigments
- >> Light-optical chameleon effect for perfect match with natural tooth substance
- >> Simple storage logistics

Filling Composites Restoratives



Dentist Dr. Basel Hourri



„Easy to use and excellent results.“

„Patient came to the office having an old composite restoration from canine to canine. And you can see old dull not shine composite filling with discoloration.“

1: Sharps and broken edges with open margins.

2: After applying the wedges and the retraction cord for pushing the gingiva, removed the old composite fillings and made new preparations, excavation of the decays, have a sound dentine to get an optimal place for dentine shade.

3: Applying on interproximal areas Harvard MultiChrome composite.

4: Restoration before polishing.

5: Restoration after polishing.

6: MultiChrome restoration.

„Broken incisal edge 21. Apply Harvard Block 'n Mask then Harvard MultiChrome Multi-Shade Restorative.“



Optimal shade-adaptation for almost all tooth shades after light polymerization.





Harvard MultiChrome

Light cure, multi-shade, composite restorative

- >> Shade-adaptive composite for almost all tooth shades
- >> Invisible transition between enamel, dentine and composite
- >> Spherical fillers
- >> Hyper-Nano technology
- >> Without any color pigments
- >> Light-optical chameleon effect
- >> Superior handling properties
- >> Non-sticky consistency, stays where placed
- >> Permanent high gloss after polishing
- >> Low shrinkage
- >> High abrasion resistance
- >> Excellent physical strength
- >> Radiopaque
- >> Opalescent
- >> Simple storage logistics

Order Details

Harvard MultiChrome	
3 g syringe	7100001
20 x 0.25 g OptiTips®	7100002
Harvard MultiChrome Kit	
3 syringes ea. 3 g Harvard MultiChrome,	7100009
1 syringe 3 g Harvard Block 'n Mask	
Harvard Block 'n Mask	
3 g syringe	7100005
20 x 0.25 g OptiTips®	7100007
Harvard Applier OptiTips®	
	7095200

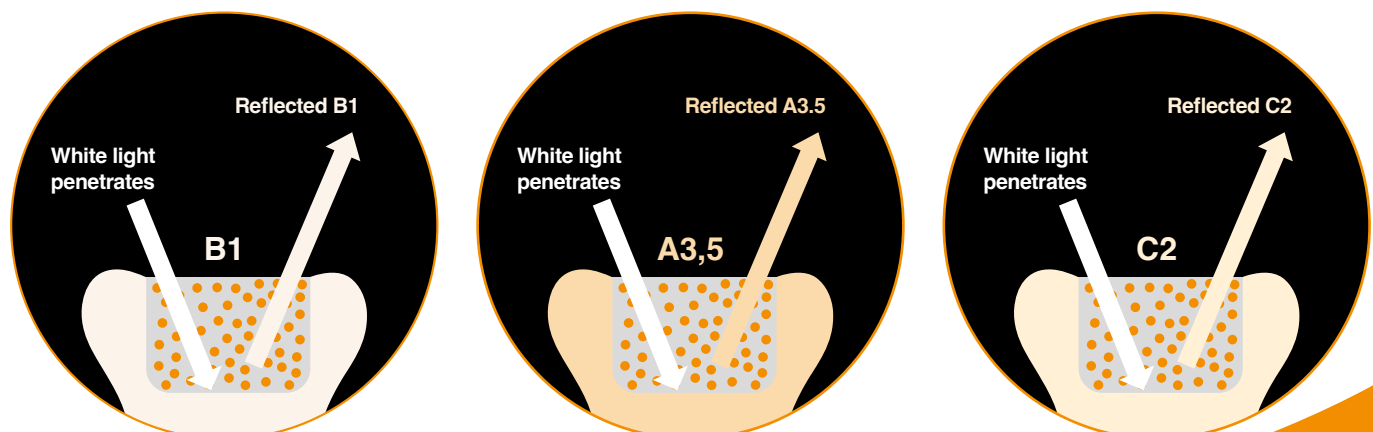
Harvard Block 'n Mask

Composite for blocking and masking

- >> Corrects the background for shade matching in difficult situations (e.g. when the dark oral cavity shines through) and in case of strong discolourations



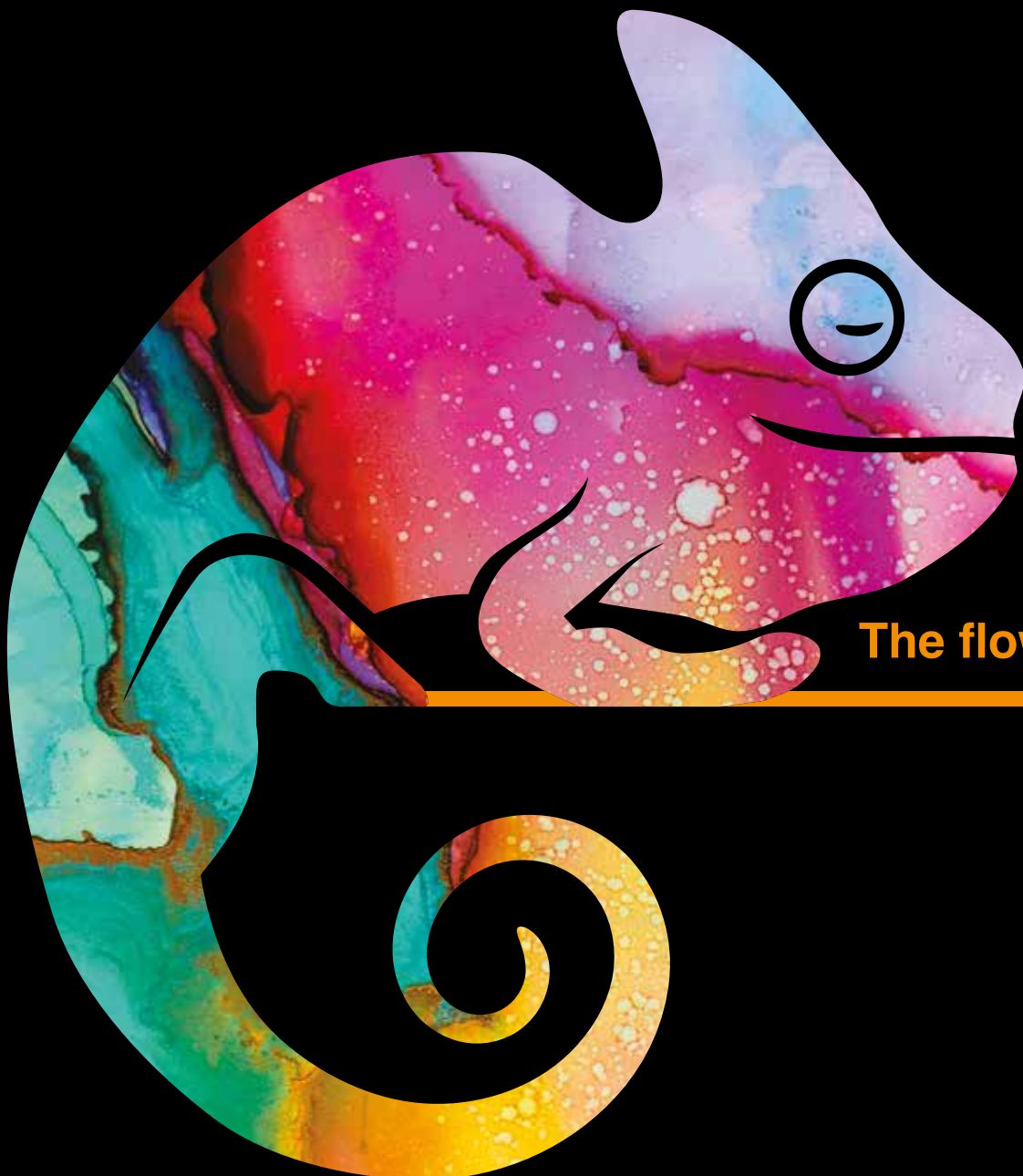
Harvard MultiChrome with round Hyper-Nano fillers. White light is refracted and reflected in cavity color.



Harvard **MultiChrome Flow**

**Perfect for
small enamel
restorations.**

- >> Hyper-Nano technology, spherical fillers
- >> Shade-adaptive composite for almost all tooth shades
- >> Without any color pigments
- >> Light-optical chameleon effect
- >> Simple storage logistics



The flowable



Harvard MultiChrome Flow

Light cure, multi-shade, flowable composite restorative

- >> Shade-adaptive flowable composite for almost all tooth shades
- >> Invisible transition between enamel, dentine and composite
- >> Spherical fillers
- >> Hyper-Nano technology
- >> Without any color pigments
- >> Light-optical chameleon effect
- >> Excellent handling
- >> Optimal flow consistency, thixotropic
- >> Permanent high gloss after polishing
- >> Low shrinkage
- >> High abrasion resistance
- >> Excellent physical strength
- >> Radiopaque
- >> Opalescent
- >> Simple storage logistics

Order Details

Harvard MultiChrome Flow	
2 x 1 ml syringe incl. 8 needle tips H18	7100003

Harvard Block 'n Mask Flow	
2 x 1 ml syringe incl. 8 needle tips H18	7100006

Harvard NeedleTips H18	
Refill bag with 50 needle tips	7095158



Harvard Block 'n Mask Flow

Flowable composite for blocking and masking

- >> Corrects the background for shade matching in difficult situations (e.g. when the dark oral cavity shines through) and in case of strong discolourations



with chameleon effect.

Extended posterior
fissure

Restoration with
Harvard MultiChrome Flow



Before



After

Optimal **shade-
adaptation for small
enamel restorations.**

Dentist MSc. Andreas Kluschke



„Perfect esthetic results with the Harvard UltraFill Multi Opacity layering technique.“

Multi Opacity Cases



Dr. Pawel Paszkiewicz



„For this demanding case I decided to use Harvard UltraFill.“

1: Initial situation with incisor tooth fracture

2: Removal of the old composite, Silicone impression



3: A palatal shell was cast on as a basis for the restoration

4: Mamelons were prepared with dentine composite (90% opacity – Harvard UltraFill A1 D)

5: Final layer was applied to the mamelons with enamel opacity (80% opacity – Harvard UltraFill A1 E) and an incisal edge of Harvard UltraFill INC



6: After the 3D anatomical correction



Harvard UltraFill

Ultra gloss, opalescent, high performance composite
for **anterior** and posterior restorations

- >> Permanent high gloss
- >> Opalescence
- >> Tooth-like fluorescence
- >> Easy to work with
- >> Superior handling properties
- >> Low polymerization shrinkage
- >> High abrasion resistance
- >> Optimal physical properties
- >> Radiopaque



Order Details

Multi Opacity

3 g syringe

A1 E	7131111
A1 D	7121111
A2 E	7131112
A2 D	7121112
A3 E	7131113
A3 D	7121113
A3.5 E	7131114
A3.5 D	7121114
BL E	7131153
BL D	7121152
INC	7141160
T	7141170

Universal Opacity

3 g syringe

A1 U	7111111
A2 U	7111112
A3 U	7111113
A3.5 U	7111114
BL U	7111151

20 x 0.25 g OptiTips®

A1 U	7111211
A2 U	7111212
A3 U	7111213
A3.5 U	7111214

Harvard Applier OptiTips®

7095200

Harvard UltraFill
„Universal Opacity“ IntroKit S
3 syringes ea. 3 g, A2 U, A3 U, A3.5 U

7175100

Further shades are possible. Please contact us.



Multi Opacity layering technique



- >> Multiple shades in **various** opacities
- >> Excellent permanent esthetics
- >> Chameleon effect

Universal Opacity easy technique



- >> Selected shades in **one** opacity
- >> In 80 % of clinical cases best compromise of opacity

Harvard UltraFill Flow

Ultra gloss, opalescent, flowable composite
for **anterior** and **posterior** restorations

- >> Easy polishability, permanent high gloss
- >> Opalescence
- >> Optimal flow consistency
- >> Thixotropic
- >> Tooth-like fluorescence
- >> Reduced polymerization shrinkage
- >> High abrasion resistance
- >> Optimal physical properties
- >> Easy to work with
- >> Radiopaque
- >> Available in Comfortip®F

Order Details			
2 x 1 ml syringe		20 x 0.25 g Comfortip® F	
A1	7112111	A2	7112212
A2	7112112	A3.5	7112214
A3	7112113		
A3.5	7112114		
B1	7112121		
BL	7112151		
incl. 8 needle tips H18			
Harvard NeedleTips H18		7095158	
Refill bag with 50 needle tips			
Harvard Applier OptiTips®		7095200	

No stock item, please contact the Harvard sales team.



Dentist MSc. Andreas Kluschke



1: Tooth 14 and 15 Wedge-shaped defects



2: Class V restorations after high gloss polish

„Easy and quick
to polish, durable
high gloss.“



Harvard PremiumFill⁺

Nano-optimized hybrid composite
for **posterior** and anterior restorations

- >> Excellent esthetics
- >> Superior handling properties
- >> Non-sticky consistency and highly sculptable
- >> Low polymerization shrinkage
- >> Tooth-like fluorescence
- >> Excellent high gloss polishability
- >> High abrasion resistance
- >> Optimal physical properties
- >> Nano-filler technology



Order Details			
Enamel Opacity			
4 g syringe			
A1 E		7082310	
A2 E		7082311	
A3 E		7082312	
A3.5 E		7082313	
Universal Opacity			
4 g syringe		20 x 0.3 g OptiTips®	
A1 U	7082300	A1 U	7082400
A2 U	7082301	A2 U	7082401
A3 U	7082302	A3 U	7082402
A3.5 U	7082303	A3.5 U	7082403
B1 U	7082304		
B2 U	7082305		
Harvard Applier OptiTips®			7095200
Harvard PremiumFill ⁺ „Universal Opacity“ IntroKit S 3 syringes ea. 4 g, A2 U, A3 U, A3.5 U			7082500

Further shades are possible. Please contact us.

No stock item, please contact the Harvard sales team.



Dentist MSc. Andreas Kluschke



„Very nice
esthetic results.“

1: Defective large composite filling on tooth 46

2: New excellent high gloss filling with Harvard PremiumFill⁺



Filling Composites

Restoratives

Harvard PremiumFlow⁺

Nano-optimized hybrid flowable composite
for **posterior** and anterior restorations

- >> Optimal flowable consistency
- >> Thixotropic
- >> Excellent high gloss polishability
- >> Beautiful esthetic restorations
- >> Low polymerization shrinkage
- >> Low abrasion
- >> Improved mechanical properties

Order Details

2 x 1 ml syringe		20 x 0.25 g ComforTip® F	
A1	7082600	A2	7082701
A2	7082601	A3	7082702
A3	7082602		
A3.5	7082603		

incl. 8 needle tips H18

Harvard NeedleTips H18	7095158
Refill bag with 50 needle tips	

Harvard Applier OptiTips®	7095200
----------------------------------	---------

Further shades are possible. Please contact us.



Before



After



Dentist MSc. Andreas Kluschke



„Perfect flow properties for the construction of sophisticated anatomical shapes (e.g. incisal and cervical restorations).“

- 1: Defective filling
- 2: After removal etching and bonding
- 3: Application of **Harvard PremiumFlow⁺**
- 4: Polished filling





Harvard Restore

Universal light cure microhybrid composite

- >> Suitable for anterior and posterior restorations
- >> Nice non-sticky consistency
- >> Low abraision
- >> Good polishability
- >> Tooth-like fluorescence
- >> Good price / performance ratio

Order Details

4 g syringe	
A1	7083201
A2	7083202
A3	7083203
A3.5	7083204
B1	7083221
B2	7083222

System Kit Plus	7083217
4 syringes ea. 4 g, A1, A2, A3, A3.5	
3 ml syringe Harvard RestoreFlow A2	
5 ml bottle Harvard Self-Bond	
5 Appli-Pads, 50 Microbrush®,	
5 needle tips	

Further shades are possible. Please contact us.



Harvard RestoreFlow

Universal flowable light cure microhybrid composite

- >> Suitable for anterior and small posterior restorations and for lining of cavities
- >> Controlled flow
- >> Good mechanical properties
- >> Tooth-like fluorescence
- >> Good price / performance ratio

Order Details

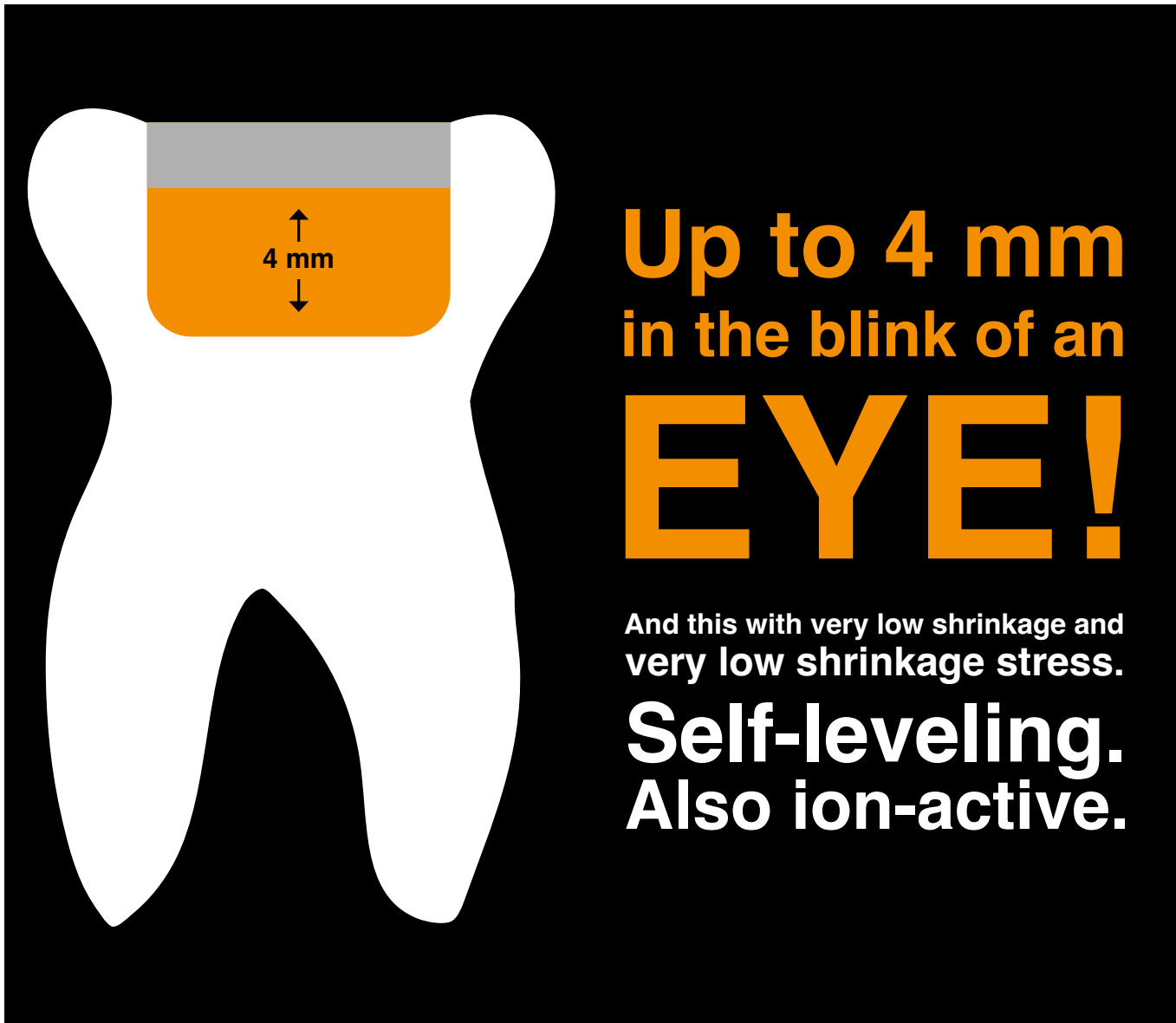
3 ml syringe	
A1	7083211
A2	7083212
A3	7083213
A3.5	7083214

incl. 3 needle tips H20

Harvard NeedleTips H20	7091226
Refill bag with 50 needle tips	

Further shades are possible. Please contact us.





Up to 4 mm
in the blink of an
EYE!

And this with very low shrinkage and
very low shrinkage stress.
Self-leveling.
Also ion-active.

Use your preferred composite to restore the enamel.

Bulk fill up to 4 mm with
Harvard IonoSphere Bulk Flow



Finalized restoration with your trusted moldable
composite e.g. **Harvard UltraFill** or **Harvard PremiumFill** +





Harvard IonoSphere Bulk Flow

Flowable composite with bioceramic fillers for a fast bulk dentine filling

- >> Bulk dentine filling up to 4 mm layer thickness
- >> Good flow properties
- >> Very low shrinkage
- >> Very low shrinkage stress
- >> Acid-inhibiting
- >> Ion-active
- >> Fluoride releasing
- >> Radiopaque

Order Details

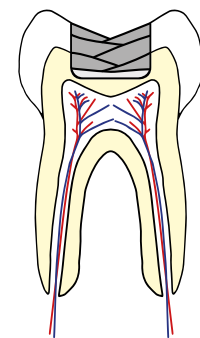
2 x 1 ml syringe	20 x 0.25 g OptiNeedleTips
Universal 7100011	Universal 7100012
incl. 8 needle tips H18	
Harvard NeedleTips H18 Refill bag with 50 needle tips	7095158
Harvard Applier OptiTips®	7095200



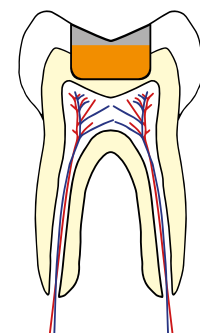
With bioceramic fillers for precise and fast bulk dentine filling.

The layer thickness of up to 4 mm enables efficient bulk filling. The flowable material is self-leveling at the surface and thus easy and quick to apply, with excellent adaptation on the cavity walls. The final layer can be carried out with the desired shade of a moldable composite. Harvard IonoSphere Bulk Flow exhibits a very low shrinkage and very low shrinkage stress, is ion-active with a high fluoride release and acid-inhibiting.

Increment technique



Bulk flow technique

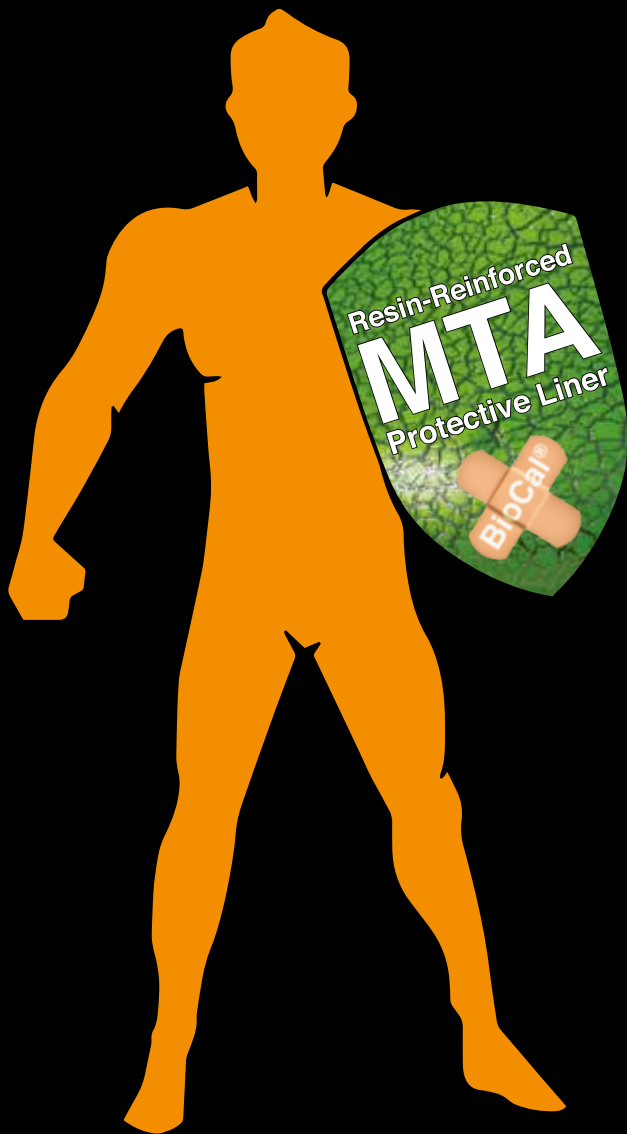


Class 2 cavity



Base in cavity up to 4 mm in one layer

Harvard BioCal®-Line



This liner protects!

- >> **Bioactive**
- >> **pH protective shield**
- >> **Mineralizing**
- >> **Light cure**

Dentist MSc. Andreas Kluschke

„Maximum pulp protection with light-curing bioactive MTA liner in deep caries lesions.“

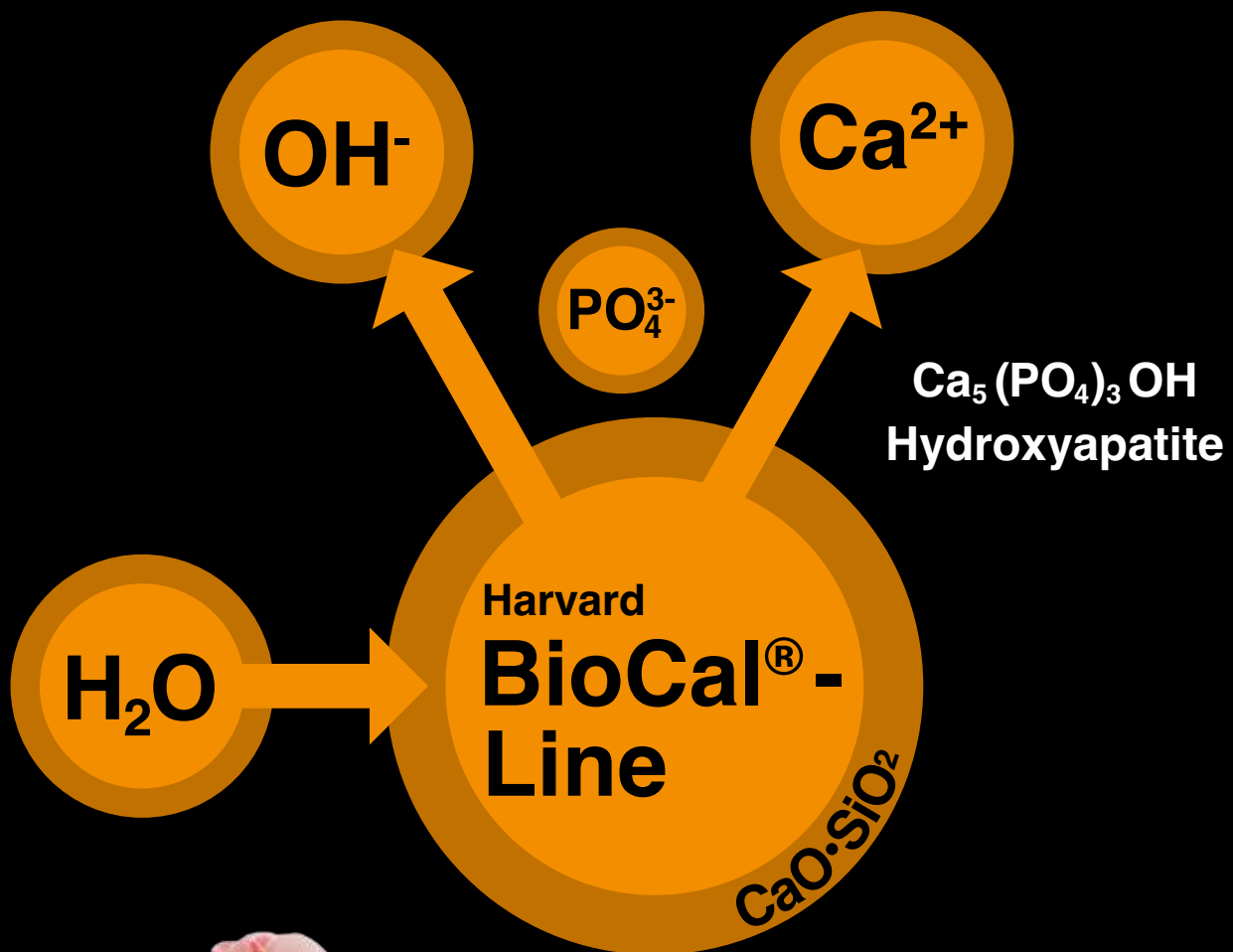


- 1: Premolar after initial preparation
- 2: Full caries excavation
- 3: Cavity lining with **Harvard BioCal®-Line** after application of adhesive system
- 4: Composite restoration with **Harvard UltraFill**



Harvard BioCal®-Line is a bioactive, light cure, resin-reinforced MTA protective liner. The good strength and the protective effect of the MTA components (high alkalinity and mineralization) ensure pulp protection with sufficient stability for subsequent filling at the same time. Harvard BioCal®-Line is moisture-tolerant, insoluble and exhibits high radiopacity. Harvard BioCal®-Line can be applied very precisely, even in deep cavities. Light cure ensures a controlled curing.

The release of calcium and hydroxyl ions promotes mineralisation. A safe and gap-free pulp protection. The high alkaline pH creates an environment hostile to bacteria and thus supports healing and protects against hypersensitivity.



Harvard BioCal®-Line

Bioactive, light cure, resin-reinforced MTA protective liner

- >> Perfect as a thin-layer, protective liner in deeper cavities
- >> Also suitable for indirect and direct pulp capping
- >> Environment hostile to bacteria (pH 11)
- >> Mechanically stable
- >> Short setting times due to light cure
- >> Mineralizing
- >> Compatible with all composite restorative materials
- >> Radiopaque

Technical data		
Flexural strength	76	MPa
Compressive strength	187	MPa
Calcium release (24 h)	204	µg / cm ²
pH value (24 h)	11	



Order Details

1 g syringe, 12 needle tips	7081554
Harvard NeedleTips H22 Refill bag with 50 needle tips	7095162



Class I cavity



Class I cavity after application of an adhesive



Application of Harvard BioCal®-Line

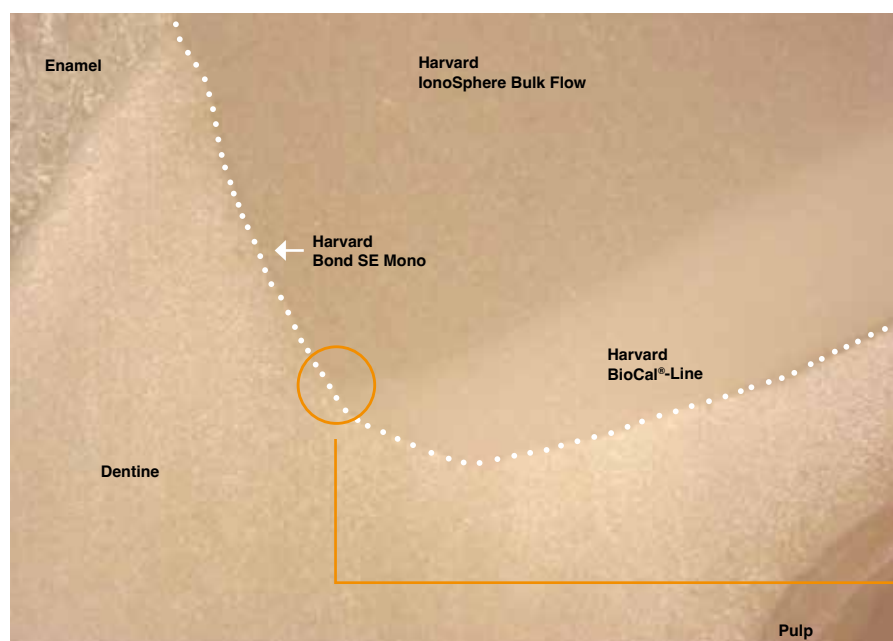


Harvard BioCal®-Line cured after 40 seconds light curing

Bioactive

Harvard BioCal®-Line should be used with a dentine adhesive, ideally with Harvard Bond SE Mono. Harvard Bond SE Mono does not restrict the bioactive effect. A continuous gap-free marginal seal and high alkaline bioactive MTA components protect pulp and dentine equally, especially in deep restorations.

High strength values and minimal layer thickness (≤ 1 mm) form the foundation for safe and reliable restorative therapy.



Laser microscopic image (magnification: 5x / 0.13)

Deep composite restoration close to the pulp Experimental Tooth. Preparation (cross section) after one-week storage in artificial saliva (37 °C / 98,6 °F, thermocycling)



Image detail (magnification: 50x / 0.95)

Interface: Dentine / Harvard IonoSphere Bulk Flow & Dentine / Harvard BioCal®-Line
In between: Harvard Bond SE Mono



Harvard CalciumHydroxide LC

Calcium hydroxide liner, light cure, resin-based
with calcium release, pH 11

- >> Suitable for indirect pulp capping
- >> High pH level with antimicrobial effect
- >> Optimal flow
- >> Radiopaque
- >> Good price / performance ratio

Order Details

2 ml syringe, 3 needle tips	7071263
Harvard NeedleTips H18 Refill bag with 50 needle tips	7095158



Classical

Harvard IonoLine

Glass ionomer liner, light cure, resin-modified
with fluoride release

- >> Suitable as liner or base
- >> Contains fluoride
- >> Perfectly flowing
- >> Radiopaque
- >> Good price / performance ratio

Order Details

2 ml syringe, 3 needle tips	7071260
Harvard NeedleTips H20 Refill bag with 50 needle tips	7091226



Harvard InterLock® ONE

Universal Adhesive

- >> Universal: suitable for all tooth conditioning techniques: with or without etching gel, wet or dry
- >> Only one thin layer necessary
- >> High and reproducible bond strength to enamel and dentine even under long term stress
- >> Effective marginal seal for low risk of postoperative sensitivity
- >> Excellent performance also with self or dual cure composites
- >> Convenient and precise application with the triangle ergonomic bottle with defined drop size

If light curing of **Harvard InterLock® ONE** cannot be achieved, please mix with **Harvard InterLock® ONE Self Cure Activator**.

Harvard InterLock® ONE Self Cure Activator

- >> Activator for safe adhesion in indications, where light curing of **Harvard InterLock® ONE** cannot be ensured (e.g. in the root canal)
- >> Ideal for cementing of posts with dual and self cure composites



5 ml



50 x 0.1 ml



5 ml

Order Details

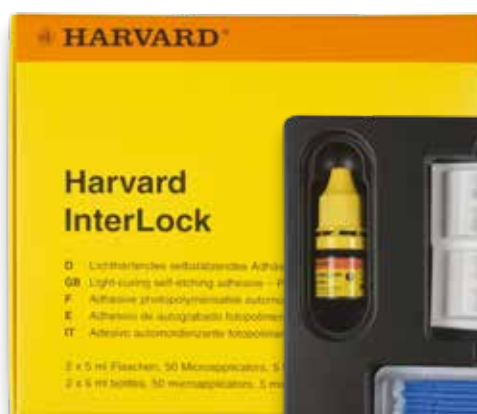
Universal Adhesive	
5 ml bottle	7083611
50 x 0.1 ml SingleDose	7083613
Self Cure Activator	
5 ml bottle	7083612
Microbrush®	
Refill bag with 50 applicators	7095156

Harvard InterLock®

Very strong, self-etch, light cure bonding within two steps

- >> Long-term, strong and safe adhesion to enamel and dentine
- >> High and even bond strength
- >> Extremely reliable
- >> Easy and fast application
- >> Excellent seal
- >> Not technique and moisture sensitive
- >> Hydrophilic for wet bonding technique
- >> For perfect margins to protect against secondary caries

The gold standard



2 x 5 ml

Order Details

2 x 5 ml bottle	
50 Microbrush®, 5 Appli-Pads	7083603
Microbrush®	
Refill bag with 50 applicators	7095156





Harvard

Bond SE Mono

Self-etch, light cure bonding; etching, priming and bonding in one step

- >> Strong and long-lasting adhesion to enamel and dentine
- >> Only one layer necessary
- >> Hydrophilic for wet bonding technique
- >> Good price / performance ratio



5 ml

Order Details

5 ml bottle	7083601
Microbrush® Refill bag with 50 applicators	7095156

Harvard

Self-Bond

Self-etch, light cure bonding

- >> For bonding of composites on dentine and enamel
- >> No extra etching necessary
- >> Only one layer necessary
- >> Easy application
- >> Hydrophilic for wet bonding technique
- >> Good price / performance ratio



5 ml

Order Details

5 ml bottle	7083218
-------------	---------

Harvard

Bond TE Mono

Light cure one bottle adhesive for total-etch technique

- >> Strong bonding to enamel and dentine
- >> Strong bonding of light cure composites, non-precious and precious metals
- >> Hydrophilic for wet bonding technique
- >> 2 bonding layers necessary; very strong adhesion
- >> Good price / performance ratio



5 ml

Order Details

5 ml bottle	7083607
-------------	---------

Harvard

Etch

Thixotropic etching gel for etching of enamel and dentine

- >> Selective enamel etching or total-etch technique for:
 - >> Composite restorations
 - >> Sealing of fissures
 - >> Adhesive cementation of inlays, onlays, crowns and bridges
- >> Optimal consistency: stays where placed
- >> Thixotropic, controlled etching
- >> Good price / performance ratio



2 ml

Order Details

2 ml syringe, 3 needle tips	7054000
Harvard NeedleTips H25 Refill bag with 50 needle tips	7095126



Filling Cements

Restoratives





Harvard POWERmer Bulk

High strength, self adhesive, dual cure composite-hybrid for restorations

- >> **Bulk fill material**
- >> No increments necessary
- >> Dual cure
- >> Self-adhesive
- >> No shrinkage
- >> **No adhesive necessary!**
- >> **Fluoride release**
- >> In strength, wear, esthetics and polishing: **LIKE A COMPOSITE!**
- >> **Translucent**
- >> Radiopaque

- >> HandMix or OptiCaps®

- >> **Quick and easy!**
- >> **An Alternative to Amalgam!**

Order Details

50 OptiCaps® ea. 0.5 g, ea. packed in aluminum pouch A2	7071202
10 OptiCaps® ea. 0.5 g, ea. packed in aluminum pouch A2	7071212
15 g powder / 7 ml liquid, dosage spoon, mixing pad A2	7071222
Harvard Applier OptiCaps®	7092000

**Resin-
Reinforced**



Universal, self-adhesive resin-modified high-performance glass ionomer cement. Bulk Fill.

Harvard POWERmer Bulk is a tooth-coloured bulk filling material with the high mechanical strength of composite and the esthetic appearance of composite. No adhesive required. This makes Harvard POWERmer Bulk an ideal alternative to amalgam.



Dr. Amir Ibrik D.D.S, N.D.B, E.R.B, MSc



**„This is an alternative
to amalgam? Amazing!“**

- 1: Mixing for 10 seconds 2: Harvard POWERmer Bulk is applied without adhesive
3: Finished restoration after 20 seconds of light cure





Filling Cements

Restoratives

The **BIOACTIVE**
DENTINE
Substitute

AND STRONG!



PO_4^{3-}
Mineralizing effect





Harvard BioPOWER Dentine

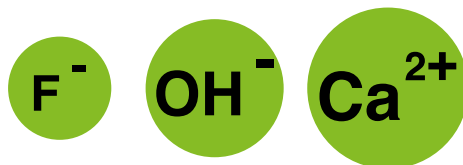
Bioactive, dual cure MTA-modified composite-hybrid dentin substitute

- >> pH value: 12
- >> Calcium release
- >> Fluoride release
- >> Bioactive
- >> Dual cure
- >> Self-adhesive
- >> No shrinkage
- >> No adhesive necessary!
- >> Strong
- >> Opaque
- >> Radiopaque
- >> HandMix or OptiCaps®

Order Details

10 OptiCaps® ea. 0.5 g, ea. packed in aluminum pouch Universal	7071410
5 g powder / 3 ml liquid, dosage spoon, mixing pad Universal	7071411
Harvard Applier OptiCaps®	7092000

**Resin-
Reinforced**



Harvard BioPOWER Dentine is an opaque dentine substitute based on MTA glass ionomer cement with calcium and fluoride release. In addition, the material can be light-cured on the surface to enable quick continuation of restoration.

The high compressive strength and a bacteriophobic environment, thanks to a high pH value of 12, ensure long-lasting results. **Harvard BioPOWER Dentine** shows no shrinkage and is self-adhesive.

A final enamel filling layer can be carried out by **Harvard POWERmer Bulk** directly, or – with a little more effort – with selective etch of the enamel, followed by an universal adhesive (e.g. **Harvard InterLock® ONE**), and followed by a suitable composite like e.g. **Harvard PremiumFill+**.



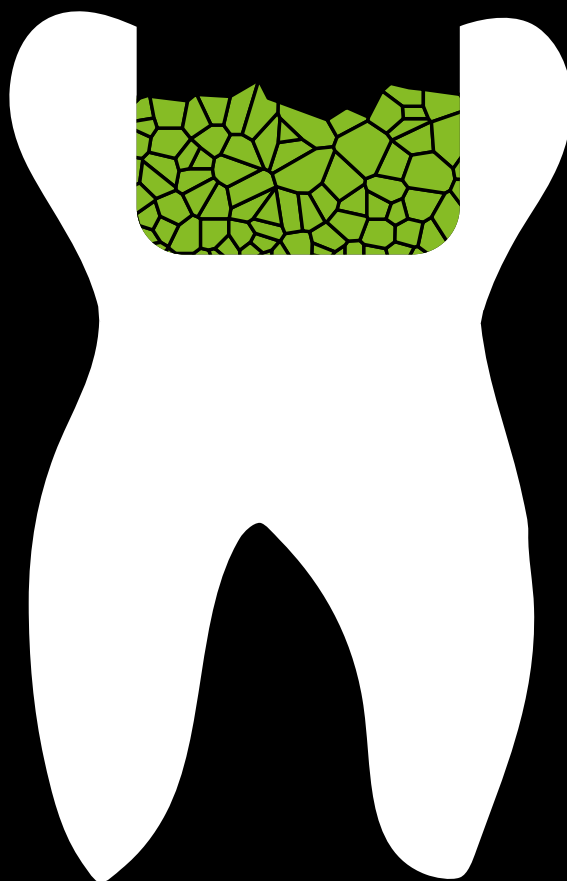
Filling Cements

Restoratives

The BIOACTIVE
DENTINE
Substitute



pH12



Resin-free



Harvard BioPhosphate Dentine

Bioactive MTA zinc phosphate dentine substitute, self cure

- >> MTA zinc phosphate dentine substitute
- >> pH value: 12
- >> Calcium release
- >> Bioactive
- >> Self cure
- >> Very low solubility
- >> Strong
- >> Opaque
- >> Radiopaque
- >> HandMix

Order Details

5 g powder / 2,5 ml liquid,
dosage spoon, mixing pad
Universal

7071510



Resin-Free

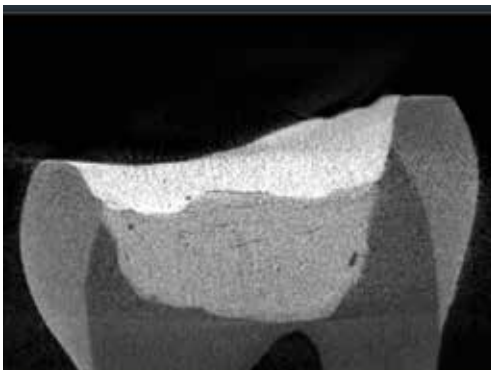
Close in composition / reaction to dentine!

Harvard BioPhosphate Dentine is an opaque dentine substitute based on MTA zinc phosphate cement with calcium release.

The high compressive strength and an environment hostile to bacteria, thanks to a high pH value of 12, ensure long-lasting results. **Harvard BioPhosphate Dentine** is volume stable and self-adhesive.

The reaction of MTA and phosphoric acid is mostly described to lead to calcium phosphate compounds e.g. **apatite**.

A final filling layer can be carried out by **Harvard POWERmer Bulk** directly, or – with a little more effort – with selective etch of the enamel, followed by an universal adhesive (e.g. **Harvard InterLock® ONE**), and followed by a suitable composite like e.g. **Harvard PremiumFill+**.



Harvard BioPhosphate Dentine covered with Harvard PremiumFill+ in an extracted tooth.

Harvard

IonoGlas Fill Extra

Esthetic classical glass ionomer cement for fillings, self cure

- >> Esthetics and natural translucency
- >> Convenient to apply and easy to handle
- >> Easy finishing
- >> Low solubility
- >> High fluoride release
- >> Radiopaque
- >> HandMix or OptiCaps®

Order Details

15 g powder / 8 ml liquid,
dosage spoon

A2	7052112
A3	7052113

50 OptiCaps® ea. 0.5 g

A2	7052252
A3	7052253

Harvard Applier OptiCaps® 7092000



15 g / 8 ml



50 x 0.5 g

**Resin-
Free**



Harvard

IonoResin Fill Extra (LC)

Resin-reinforced glass ionomer cement for fillings, light cure

- >> Esthetic natural transparency
- >> Fine fillers
- >> Light- and self cure
- >> Good polishability
- >> Very good mechanical properties, practically no shrinkage
- >> Practically insoluble
- >> Fluoride release
- >> Radiopaque
- >> HandMix or OptiCaps®

Order Details

15 g powder / 8 ml liquid, dosage spoon	
A2	7071118
A3	7071119
A3.5	7071120

50 OptiCaps® ea. 0.5 g	
A2	7071253
A3	7071254
A3.5	7071255

Harvard Applier OptiCaps®	7092000
---------------------------	---------

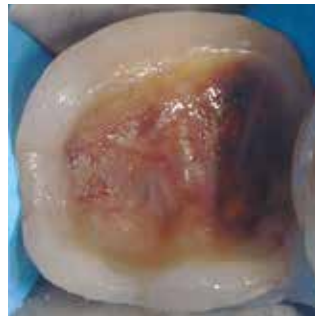
No stock item, please contact the Harvard sales team.



**Resin-
Reinforced**

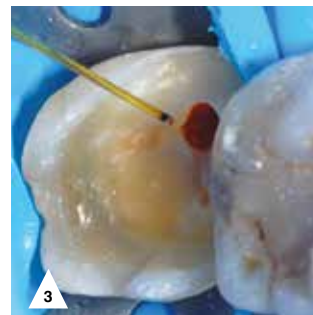
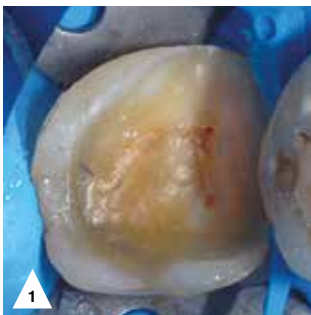


Case



„The patient presented with secondary caries under the old restoration. The photo shows the typical active caries discoloration (brown-orange). The periapical radiograph (taken a few weeks earlier) showed no signs of apical rarefaction. According to the clinical rationale for the endodontic diagnosis, the radiographic distance between the caries and the pulp chamber was 0.67 mm, while the cold test had an intensity of 1 and a transit time of less than 30 seconds; there was no spontaneous pain. If we summarize these data, we are dealing with a probable „PULPAR HYPEREMIA“ or „REVERSIBLE PULPITE“, an indicative case for the implementation of Vital Pulp Therapy (direct pulp capping).“

„Preservation of pulp vitality“



- 1: After removal of the carious tissue, an opening of the mesial vestibular pulp horn with a diameter of less than 1 mm can be seen
- 2: To determine the quality of the bleeding, a mini-pulpotomy was performed with a spherical tungsten carbide bur
- 3 + 4: Bleeding was controlled within 30 seconds, confirming the diagnosis of reversible pulpitis. An 810 diode laser attached to a 400-micrometer fiber was used to control the gemacium to facilitate the placement of the biocompatible coating material
- 5+6: Insertion of BioCal®-CAP onto the exposed pulp
- 7: Result

Conclusion

„BioCal®-CAP is a viable alternative to older generation materials (MTA) for preserving the pulp when it is exposed due to carious pathology. The hybrid chemical composition of BioCal®-CAP allows the direct restoration procedure to be performed easily by reducing the time required for the procedure. The success of pulp-preserving procedures depends in advance on the clinical conditions of the case to be treated.“





Harvard BioCal®-CAP

Bioactive, light cure, resin-modified MTA cement
for direct and indirect pulp capping

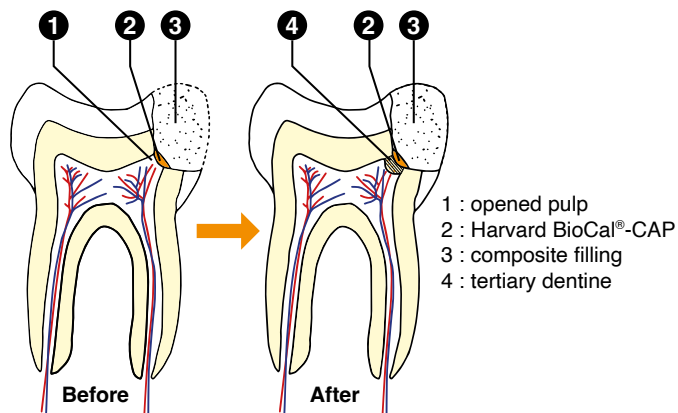
- >> For direct and indirect pulp capping in the treatment of deciduous and adult teeth
- >> Calcium release and a high pH value (pH 11) promote the formation of hydroxyapatite as well as tertiary dentine
- >> Creates an environment hostile to bacteria
- >> Moisture tolerant
- >> Virtually no solubility
- >> Good Radiopacity
- >> Fast, after light cure treatment can be continued immediately
- >> Thixotropic properties

Order Details

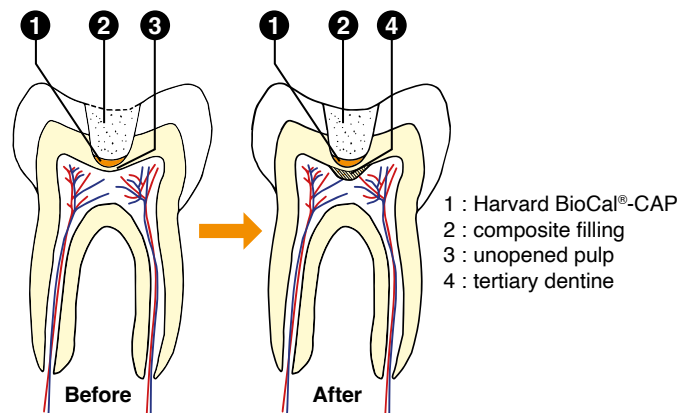
1 g syringe, 12 needle tips	7081550
4 x 1 g syringe, 50 needle tips	7081551
Harvard NeedleTips H22 Refill bag with 50 needle tips	7095162



Direct pulp capping



Indirect pulp capping



Significant release of bioactive calcium promotes the formation of hydroxyapatite and tertiary dentine.



The plaster for the pulp.



Harvard MTA-CAP

Flowable fast setting **MTA cement** in capsules

- >> Particularly suitable for pulp capping
- >> Calcium release and a high pH value (pH 12) promote the formation of hydroxyapatite and tertiary dentine
- >> Flowable consistency
- >> Extra fast setting
- >> Mixing time: 30 sec
- >> Working time: 2:00 min (from start of mixing at 23 °C (73 °F))
- >> Next treatment step: 3:00 min

Set also in humid conditions

Order Details

2 OptiCaps® ea. 0.25 g, ea. packed in aluminum pouch	7081503
Harvard Applier OptiCaps®	7092000



2 x 0.25 g

Harvard CalciumHydroxide

Calcium hydroxide paste

- >> Suitable for direct and indirect pulp capping
- >> Paste with perfect consistency
- >> Good price / performance ratio

Order Details

2 ml syringe, 3 needle tips	7071261
-----------------------------	---------



2 ml

**Resin-
Free**



Harvard MTA-PT

Fast cure, reinforced radiopaque MTA cement in capsules

- >> Particularly suitable for pulpotomy
- >> Calcium release and a high pH value (pH 12) promote the formation of hydroxyapatite as well as tertiary dentine
- >> Flowable consistency
- >> Particularly radiopaque
- >> Fast setting
- >> Mixing time: 30 sec
- >> Processing time: 2:00 min (from start of mixing at 23 °C (73 °F))
- >> Next treatment step: 3:00 min

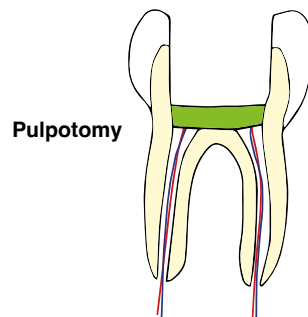
Set also in humid conditions

Order Details

2 OptiCaps® ea. 0.25 g, ea. packed in aluminum pouch	7081512
Harvard Applier OptiCaps®	7092000

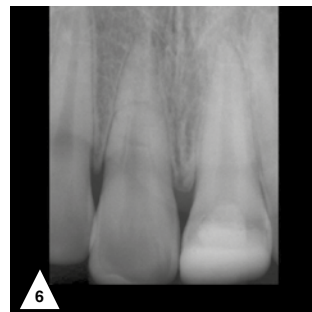
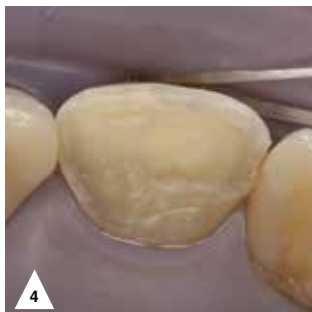
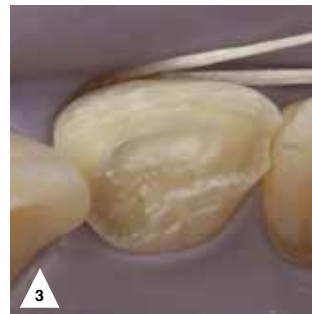
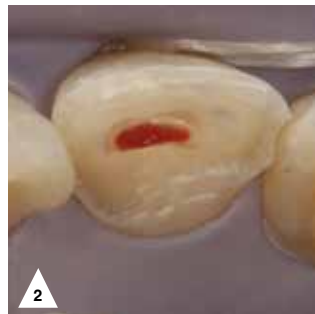


2 x 0.25 g



Pulpotomy

Clinical case with Harvard MTA-PT (MTA XR Flow Fast) Source: Thonemann/Federlin, University Regensburg, Germany



„Product solutions that are increasingly adapted to the individual situation in terms of technology and material consistency make work in endodontics much easier.“

1: Initial situation: Anterior tooth trauma, complicated crown fracture 21 2: Partial Pulpectomy 3: Application of Harvard MTA-PT 4: Covering with glass ionomer cement 5: 4 months after trauma: 21 vital 6: 1 year after trauma: 21 vital



HARVARD

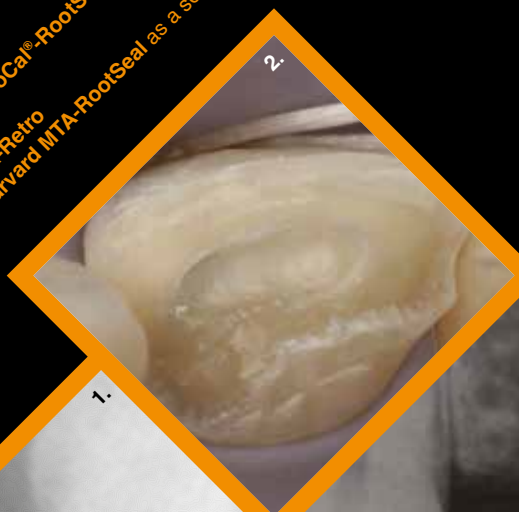
ENDODONTICS

You want perfectly coordinated products for your Endo Treatment? Our reliable and easy-to-use materials will help you to provide a patient-oriented and successful treatment and thus ensure long-lasting success. Harvard has the perfectly matched product for every indication.

Then take a look here:

- >> Root Canal MTA Universal
- >> Root Canal MTA Specialities
- >> Root Canal-Preparation & -Dressing
- >> Root Canal Sealer

- Pictures from practice**
- 1.: X-ray of the final obturation with Harvard BioCal®-RootSeal
 - 2.: Application of Harvard MTA-PT
 - 3.: X-ray after placement of Harvard MTA-Retro
 - 4.: Root filling with gutta-percha and Harvard MTA-RootSeal as a sealer



3.

2.

1.

4.



Discover ...

... all Harvard products for the endodontic treatment.

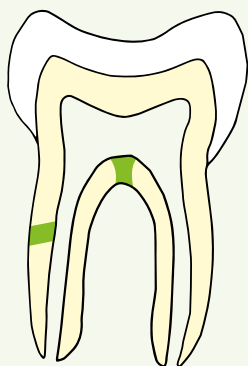
- >> **Repair** – an MTA cement in the capsule; designed for the closure of root perforations. (**Harvard MTA-Repair**)
- >> **Ortho** – for direct and simple closure of the apex with a particularly thin-bodied and long-setting MTA cement in the capsule. The enclosed EndoDirect syringe has a very flexible application cannula, so that even in the case of strongly curved root canals can be applied at full working length. (**Harvard MTA-Ortho**)
- >> **Retro** – MTA materials for retrograde root canal filling in capsule. (**Harvard MTA-Retro**)
- >> **Root Seal** – for definitive root canal sealing in combination with a master point in the automix syringe, direct application syringe – ready to use or in the capsule. (**Harvard MTA-DirectSeal; Harvard MTA-RootSeal; Harvard BioCal®-RootSeal**)

The Harvard **MTA Universal** cements for mixing or in the capsule are suitable for most endodontic indications.
Harvard MTA cements and BioCal® materials are also very well suited for the treatment of children.



REPAIR

For filling of root perforations

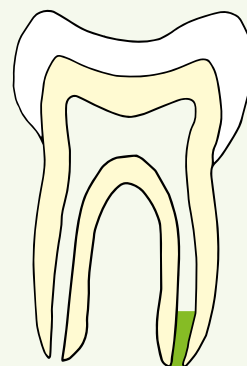


Harvard
MTA-Repair



ORTHO

Orthograde root canal filling

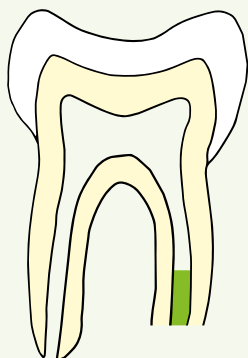


Harvard
MTA-Ortho



RETRO

Retrograde root canal filling

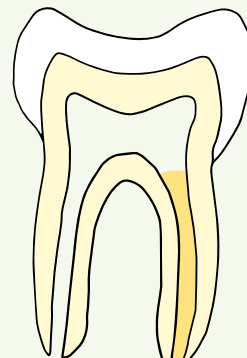


Harvard
MTA-Retro



ROOT TEMP

Temporary root canal filling

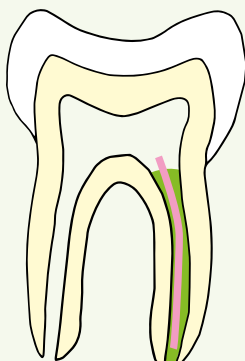


Harvard
RootTemp



ROOT SEAL

Root canal sealer

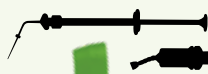


Harvard
MTA-DirectSeal



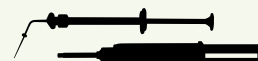
or

Harvard
MTA-RootSeal



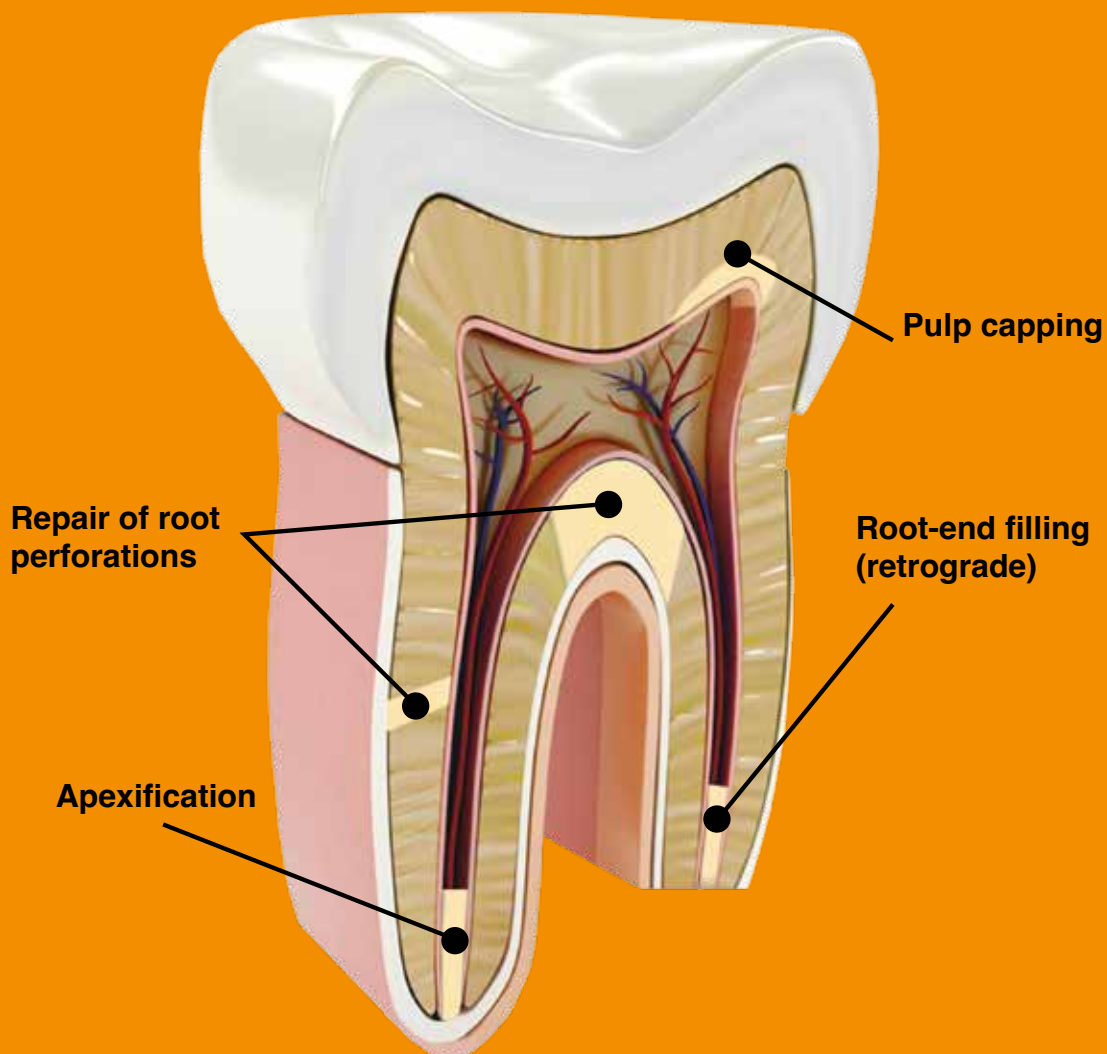
or

Harvard
BioCal®-RootSeal





(Mineral-Trioxide-Aggregat)



Resin-Free



Harvard MTA Universal OptiCaps®

Endodontic repair cement in capsules based on MTA

- >> Highly biocompatible material
- >> Excellent bond to dentine
- >> Radiopaque
- >> Firm and homogenous consistency directly from the capsule
- >> Promotes tertiary dentine formation
- >> Setting not affected by humidity
- >> Suitable for pulp capping, sealing root perforations, root end fillings (retrograde)
- >> Mixing time: 30 sec
- >> Working time: 2:00 min (from start of mixing at 23 °C (73 °F))
- >> Next clinical step: 5:00 min

Set also in humid conditions

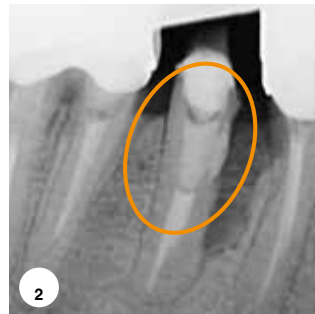
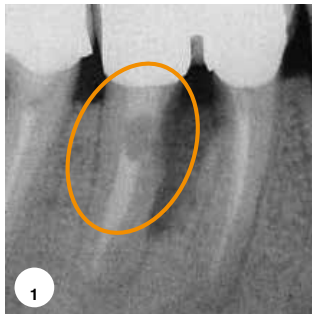
Order Details

2 OptiCaps® ea. 0.25 g, ea. packed in aluminum pouch	7081502
Harvard Applier OptiCaps®	7092000



2 x 0.3 g

Dentist Dr. Oxana Hilfer



„Due to MTA,
good long term
prognosis.“

1: Initial situation: Damaged root canal wall and demineralized bone **2: After treatment:** Root canal perforation sealed with Harvard MTA Universal **3: After one year:** Perfect seal of the application areas, new remineralized bone and better retention of the tooth

Order Details

1 g powder, 3 ml liquid, dosage spoon, mixing pad, spatula	7081507
2 g powder, 4 ml liquid, dosage spoon, mixing pad, spatula	7081508

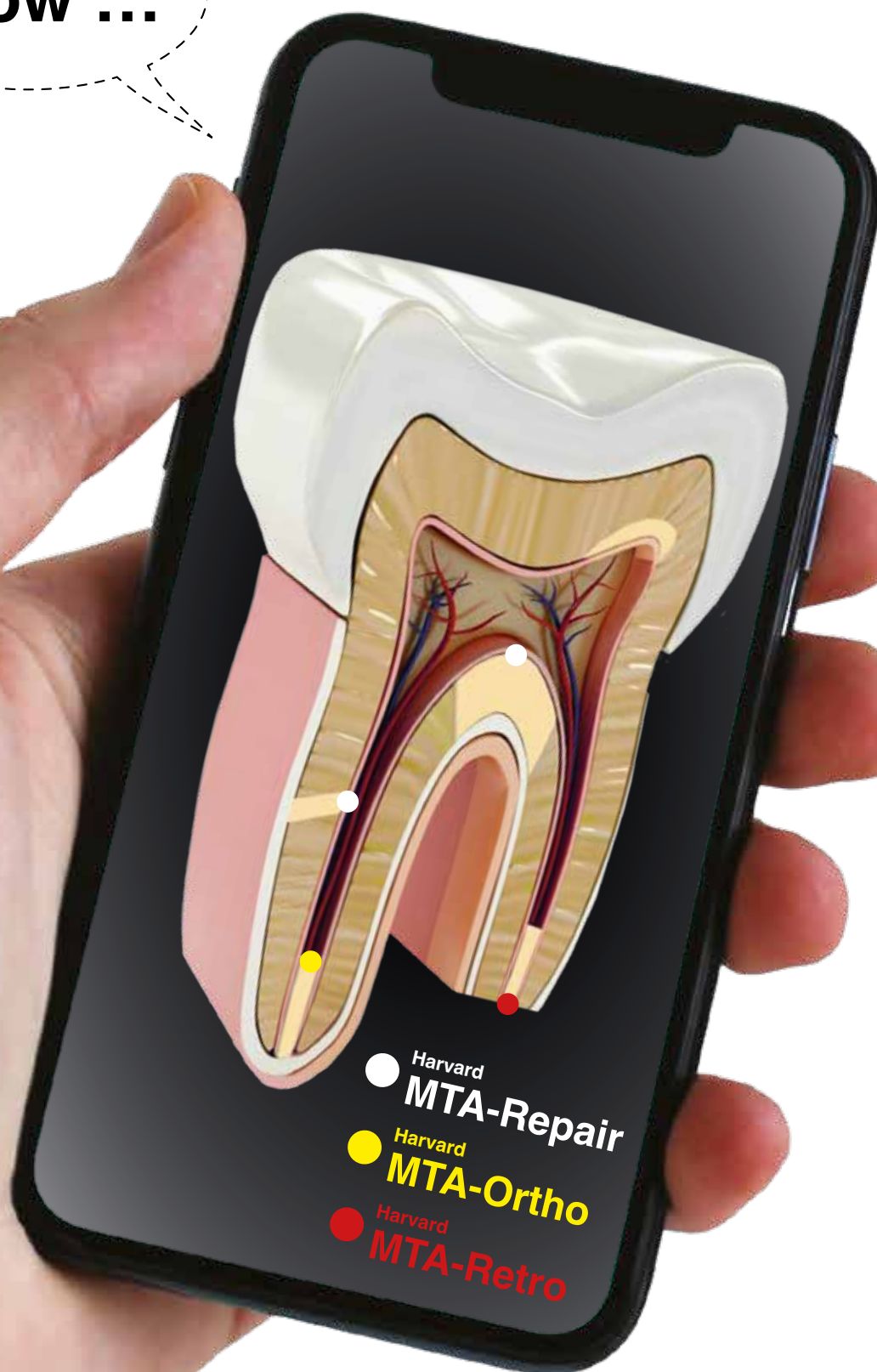


1 g / 3 ml
2 g / 4 ml

Root Canal MTA Specialities

Endodontics

Good to
know ...





Harvard MTA-Repair

Extra radiopaque MTA cement in capsules

- >> Specially recommended for filling of root perforations
- >> Firm consistency
- >> Extra radiopaque
- >> Mixing time: 30 sec
- >> Working time: 2:00 min (from start of mixing at 23 °C (73 °F))
- >> Next clinical step: 5:00 min

Set also in humid conditions

Order Details

2 OptiCaps® ea. 0.25 g, ea. packed in aluminum pouch	7081505
Harvard Applier OptiCaps®	7092000



Harvard MTA-Ortho plus EndoDirect

Flowable MTA cement in capsules with extended working time

- >> Particularly suitable for direct and easy closure of the apex
- >> Flowable consistency
- >> Extra long working time (4:00 min)
- >> Mixing time: 30 sec
- >> Working time: 4:00 min (from start of mixing at 23 °C (73 °F))
- >> Next treatment step: after only 10:00 min

Set also in humid conditions

Easy to use:

1. Mix the MTA capsule
2. Fill the endo syringe with the material directly from the capsule
3. Thanks to the flexible endo tip and the endo-stop, controlled MTA application up to the apex of the root canal

Order Details

2 OptiCaps® ea. 0.25 g, ea. packed in aluminum pouch, 2 MTA EndoDirect syringes with flexible endo tip	7081510
---	---------



For the perfect application of **MTA-Ortho** into the root canal a special EndoDirect syringe is available.



Bended needle tip with individual working length



Filling of the Harvard EndoDirect syringe



Bring piston into the Harvard EndoDirect syringe



Application of Harvard MTA-Ortho into the root canal



Root Canal MTA Specialities

Endodontics

Harvard MTA-Retro

Fast setting, extra radiopaque MTA cement in capsules

- >> Specially recommended for root end filling (retrograde)
- >> Firm consistency
- >> Extra radiopaque
- >> Fast setting
- >> Mixing time: 30 sec
- >> Working time: 2:00 min (from start of mixing at 23 °C (73 °F))
- >> Next clinical step: 3:00 min

Set also in humid conditions

Order Details

2 OptiCaps® ea. 0.25 g, ea. packed in aluminum pouch	7081506
Harvard Applier OptiCaps®	7092000

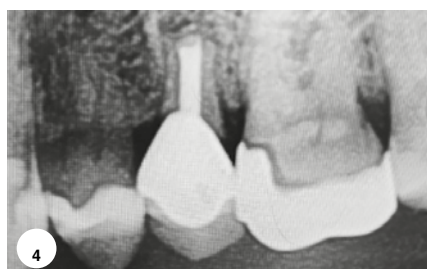


Perfect root end filling.

Harvard MTA-Retro Fast setting,
extra radiopaque MTA cement in
capsules



Dentist Dr. med. Klaus Herrligkoffer



„Harvard has the
perfect material for
this treatment.“

Infected tooth 25

„Pain swollen on the upper left second premolar 25. From the diagnostic X-ray, a radiolucency around the tip of the root, clinical examination reveals movement of the tooth and an old root canal with post and core plus crown.“

- 1: First clinical image
- 2: First X-ray before treatment
- 3: X-ray after placement of
Harvard MTA-Retro
- 4: X-ray after 12 months





Harvard

Glide & Clean

Harvard Glide & Clean is a carbamide peroxide and EDTA containing gel in syringes for the effective and facilitated cleaning of the root canal

- >> Facilitated removal of pulp tissue, dentine chips and debris
- >> Removal of the smear layer
- >> Chemical preparation
- >> Lubricant for rotary instruments for root canal preparation, reduction of the risk of fracture

Order Details

2 ml syringe, 6 flexible tips

7081560



Harvard

RootTemp

Harvard RootTemp is calcium hydroxide for temporary root canal dressing

- >> Bacteria hostile environment (pH 12)
- >> Mineralizing
- >> Good radiopacity
- >> Easy application directly into the root canal
- >> Flexible, curved EndoTip

Order Details

2 ml syringe, 6 endo tips

7071264

Harvard Endo Tips

7083618

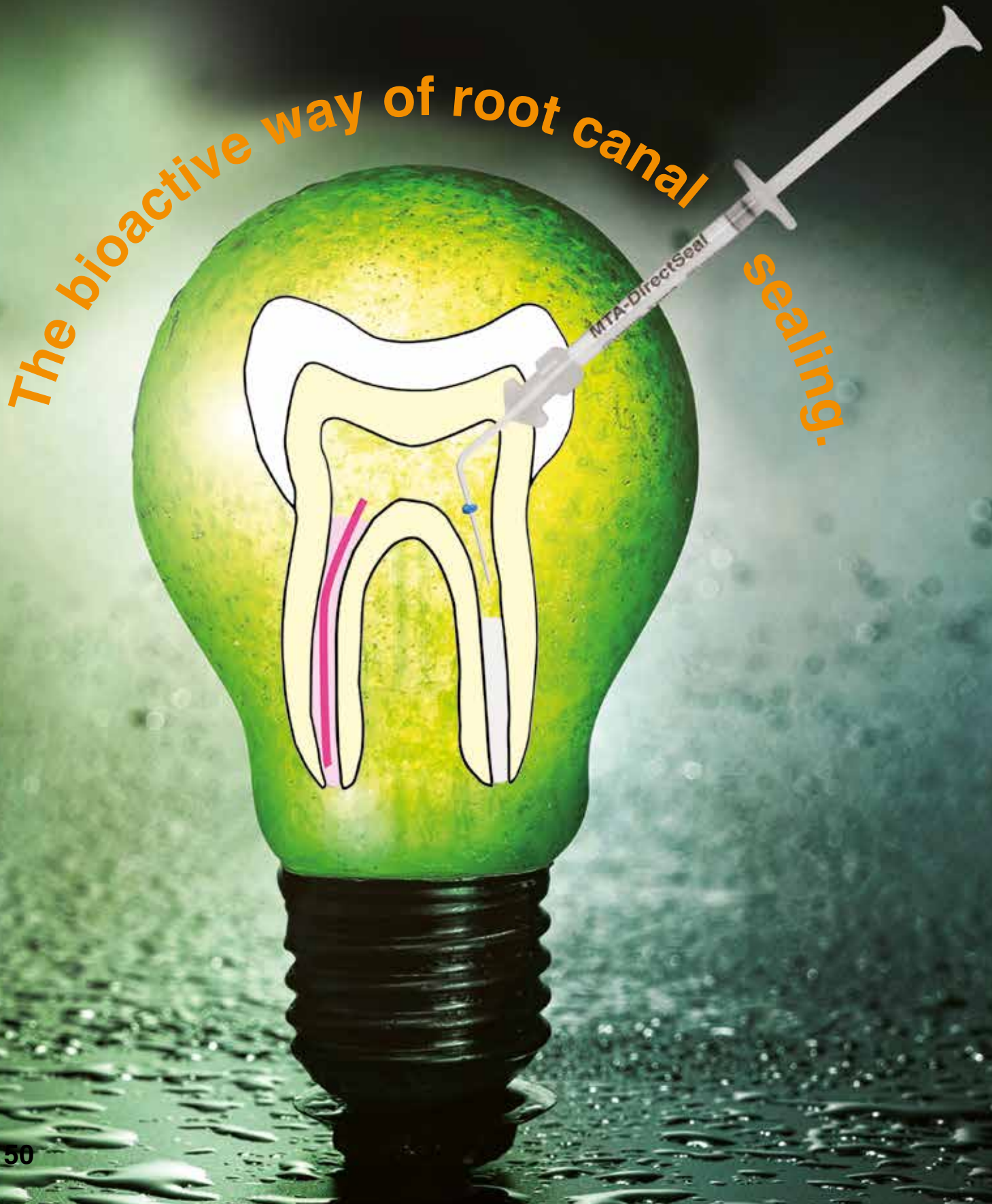
Refill bag with 25 endo tips





Root Canal Sealers

Endodontics





The 3 **Bioactive** Root Canal Sealers.

>> **Harvard MTA-DirectSeal**

Ready-to-use, bioactive, MTA root canal sealer

>> **Harvard MTA-RootSeal**

Bioactive MTA root canal sealer in capsules

>> **Harvard BioCal[®]-RootSeal**

Bioactive, resin-modified MTA root canal sealer



Root Canal Sealers

Endodontics





Harvard MTA-DirectSeal

Ready-to-use, bioactive MTA root canal sealer

Harvard MTA-DirectSeal is a bioactive MTA root canal sealer that can be applied directly from the syringe into the root canal in combination with gutta-percha points. The root canals are sealed without any marginal gap. MTA-DirectSeal is particularly favourable in use with a Mastercone. The high pH value of 12 shows hostile effect against bacteria. The material hardens by absorbing moisture from the tooth.

The performance features of Harvard MTA-DirectSeal at a glance:

- >> No mixing necessary – ready to use
- >> Easy application from the syringe with flexible EndoTip and silicone stopper
- >> High pH value of 12 – has an anti-bacterial effect
- >> Working time approx. 1 hour
- >> Material is mineralising
- >> Gap-free sealing between root canal and gutta-percha
- >> Highly radiopaque
- >> Resin-free
- >> Strong calcium release

Indication:

- >> Root canal sealing

Technical data:

- >> Working time: approx. 60 minutes
- >> Setting time: approx. 4 - 5 hours
- >> X-ray visibility: 350% Al
- >> Strong calcium release

Order Details

1 g syringe, 8 endo tips

7081514

**Resin-
Free**

**READY
to use!**

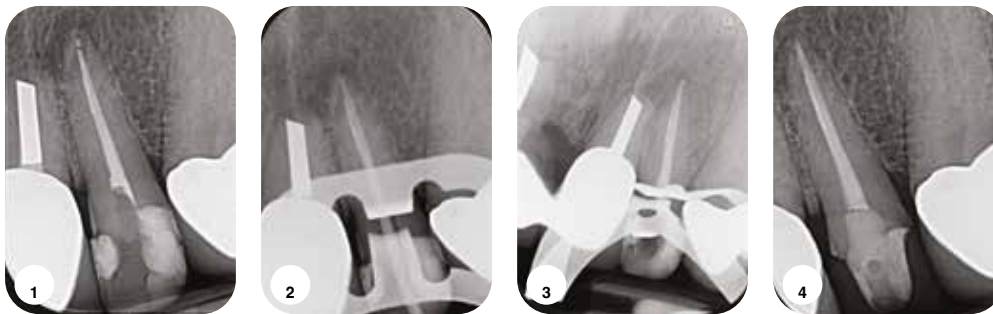


Root Canal Sealers

Endodontics



Dr. med. dent. Maximilian Donges



„The patient presented at the practice with an insufficient root canal filling with apical radiolucency at tooth 22. The tooth was asymptomatic and was found to be insufficiently preserved during a routine check-up. In addition to the carious lesions at the margins of the fillings, an osteolysis was visible in the apical area.

- 1: The image shows insufficient fillings and an apical radiolucency with a diameter of 6 mm
- 2: A revision of the root canal filling with nickel-titanium files was performed, visible in the image as a master point image with gutta-percha
- 3: The root filling was performed with gutta-percha and **Harvard MTA-RootSeal** as a sealer
- 4: A significant improvement in the apical situation is visible just six months after the repeat root filling with gutta-percha and MTA

Conclusion: The handling and user-friendly application of the MTA-Sealer make the workflow much easier. In addition, the tissue-friendly material can be expected to produce predictably good results.“



PD Dr. Johannes Ebert

„Investigation of microleakage of bioactive root canal sealers.“

„University Erlangen, Germany. Kopecka M, Opperskalski L, Zorzin J, Petschelt A, Lohbauer U, Ebert J

Uniklinikum
Erlangen



The aim of this study was to measure microleakage of this new sealer at two different time points (one week and 6 months) and to compare them with two well-established sealer materials.

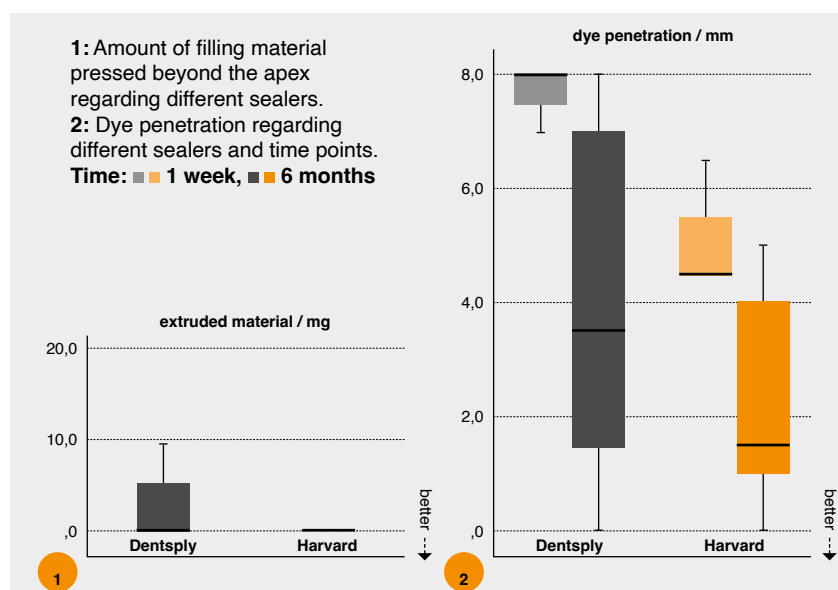
Additionally, the amount of material pressed beyond the apex (overfilling) was measured.

Excerpt from the study Erlangen, Germany 2022

Conclusion

The new materials under investigation showed less leakage and slightly less material overfilling than the well-established material AH Plus that was used for comparison.

Thus, regarding the parameters tested, the new material Harvard MTA-RootSeal can be recommended for clinical use.“





Harvard MTA-RootSeal

Bioactive MTA root canal sealer in capsules

- >> Excellent seal
- >> Apatite formation through reaction of released calcium and hydroxide with endogenous phosphate
- >> Mineralizing
- >> Bacteria-hostile environment (pH 12)
- >> Self cure
- >> Easily removable with Mastercone/Guttapercha
- >> Radiopaque
- >> OptiCaps® capsule for consistent consistency and convenient mixing
- >> Optional with EndoDirect syringe: direct application into the root canal
- >> Mixing time: 30 sec
- >> Working time: > 10:00 min (from start of mixing at 23 °C (73 °F))
- >> Next clinical step: after 60:00 min

Set also in humid conditions

Order Details

2 OptiCaps® ea. 0.25 g,
ea. packed in aluminum pouch,
2 MTA EndoDirect syringes with
flexible endo tip

7081511



**Resin-
Free**



Dr. Amir Ibrik D.D.S, N.D.B, E.R.B, MSc

„Harvard MTA-RootSeal for me the first choice.“

Harvard MTA-RootSeal is a pure MTA, easy to use, hydrophilic, has a very good consistency and offers a very good adaptation and sealing of the root canal wall. Further advantages are: a high pH value (antibacterial effect) biocompatibility, fast setting time, no postoperative pain and easy revisability.



Optional: The EndoDirect Syringe for perfect application.



Flexible endo-tip with individual working length



Filling the EndoDirect syringe

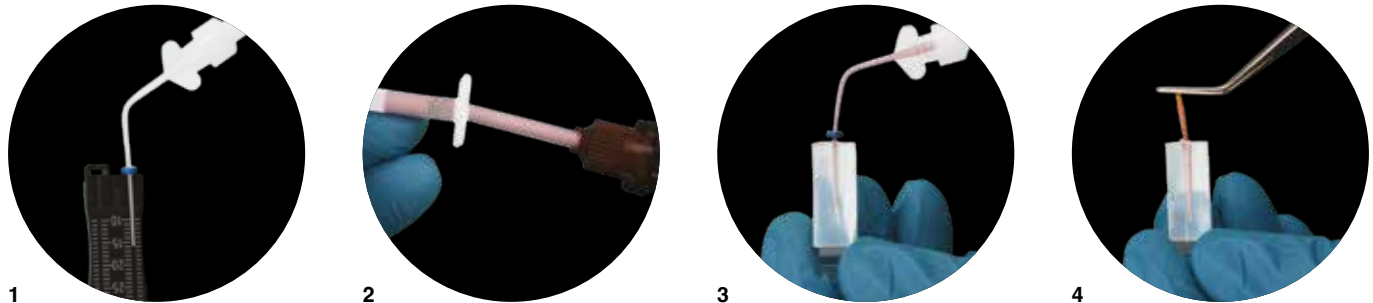


Insertion of the plunger into the EndoDirect syringe



Application of the material into the root canal

Application with the EndoDirect syringe:



- 1: Set of the working length with the endo stop 2: Transfer the required amount of Harvard BioCal®-RootSeal into the EndoDirect syringe
3: Injection of Harvard BioCal®-RootSeal into the root canal 4: Insertion of gutta-percha up to the working length into the root canal

**Resin-
Reinforced**

PD Dr. Johannes Ebert

„Investigation of microleakage of bioactive root canal sealers.“

Uniklinikum
Erlangen

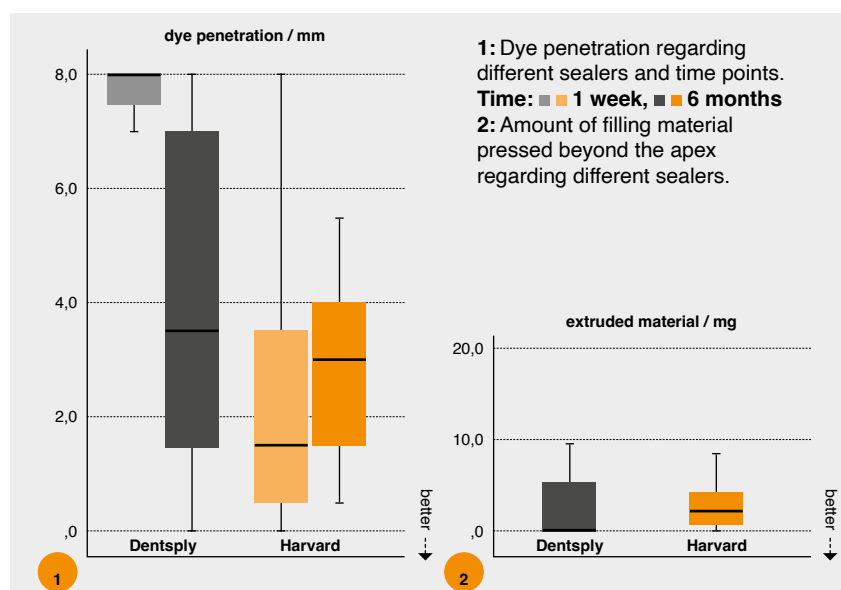


„University Erlangen, Germany. Kopecka M, Opperskalski L, Zorzin J, Petschelt A, Lohbauer U, Ebert J

The aim of this study was to measure microleakage of this new sealer at two different time points (one week and 6 months) and to compare them with two well-established sealer materials. Additionally, the amount of material pressed beyond the apex (overfilling) was measured.

Conclusion

The new materials under investigation showed less leakage and slightly less material overfilling than the well-established material AH Plus that was used for comparison. **Thus, regarding the parameters tested, the new material Harvard BioCal®-RootSeal can be recommended for clinical use.**





Harvard

BioCal®-RootSeal

Bioactive, resin-modified MTA root canal sealer

- >> Excellent seal
- >> Apatite formation through reaction of released calcium and hydroxide with endogenous phosphate
- >> Mineralizing
- >> Environment hostile to bacteria (pH 11)
- >> Self cure and additional light cure for faster setting of the surface
- >> Easy to remove and revise, e.g. for subsequent post placement with fiber posts
- >> Convenient application from the minimix syringe
- >> Radiopaque
- >> Optional: for optimal, bubble-free, direct application into the root canal also available with **EndoDirect syringes** (Harvard BioCal®-RootSeal plus EndoDirect)

Order Details

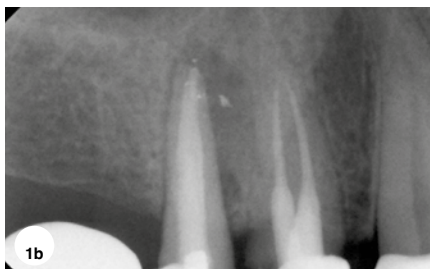
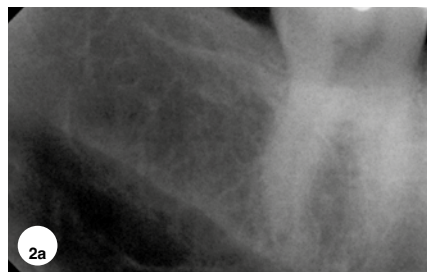
4 g minimix syringe, 10 EndoDirect syringes with flexible endo-tip 10 mixing tips (S-Brown)	7081552
4 g minimix syringe, 10 mixing tips (5 x S-Brown, 5 x O-Brown) 5 intra tips long, mixing pad	7081553
Harvard Mini 4:1 / 10:1 S-Brown Refill bag with 50 mixing tips	7093050
Harvard Mini 4:1 / 10:1 O-Brown Refill bag with 50 mixing tips	7091100
Harvard IntraTips long Refill bag with 50 intra tips	7083620



Dentist Dr. Nihad Hababat

„Best results with Harvard BioCal®-RootSeal.“

„I recommend **Harvard BioCal®-RootSeal** to every dental professional because it is easy to use, safe and cost-effective, no matter what technique is used. Since we started working with **Harvard BioCal®-RootSeal**, we no longer have to fear possible negative consequences of exceeding the material through the apex (foramen apicale).“



1: Chronic periapical abscess tooth 14

a: Before: The patient came in with an abscess with fistula formation in the upper right premolar region (tooth 14). X-ray with inserted gutta-percha point in the fistula tract

b: After: X-ray of the final obturation with Thermafil® and Harvard BioCal®-RootSeal

2: Deep filling near the pulp, tooth 47

a: Before: The patient came in with severe and constant pain in the right lower molar (tooth 47 / diagnostic pulpitis).


X-ray: Tooth 47 – deep filling near the pulp

b: After: X-ray of the final obturation with Thermafil® and Harvard BioCal®-RootSeal




HARVARD

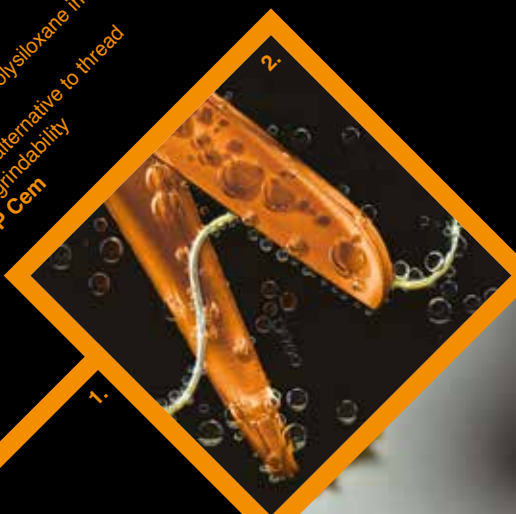
PROSTHETICS



Harvard offers a wide range of products for dental prosthetics. Discover the right products for a range of applications over the next few pages.

- >> **Impression Materials**
- >> **Retraction Material**
- >> **Bite Registration Material**
- >> **Core Build-Up & Post Cementation**
- >> **Temporary Crown & Bridge Materials**
- >> **Temporary Luting Cements**
- >> **Semi-Permanent Luting Composite**
- >> **Permanent Luting Composites**
- >> **Permanent Luting Cements**
- >> **Transparent Matrix Material**

Pictures from practice
 1.: Harvard SuperSnap® – superhydrophilic vinyl polysiloxane impression material with SuperSnap property
 2.: Harvard LigiCord® – a supplement or an alternative to thread
 3.: Harvard Bite – precise trimming and grindability
 4.: Crown fixation with Harvard TEMP Cem














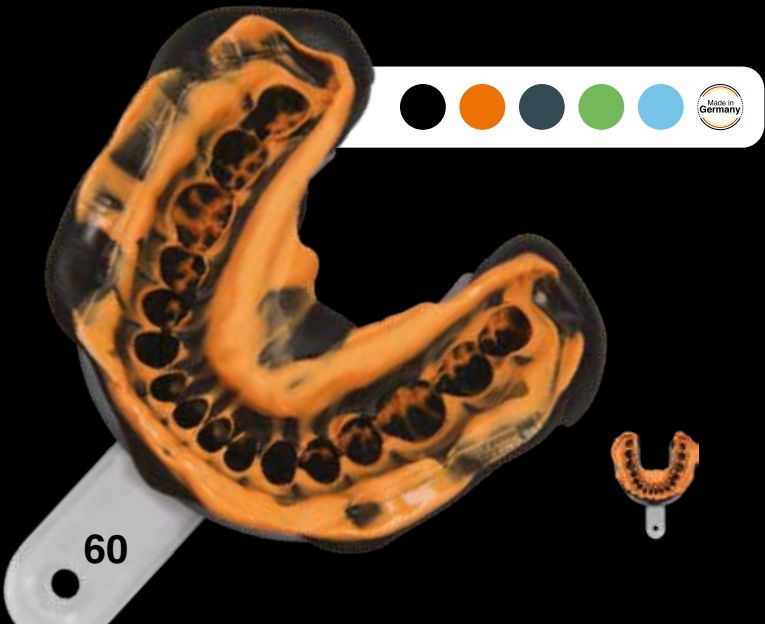


Harvard SuperSnap®

Superhydrophilic vinyl polysiloxane impression material with SuperSnap property

The recommended combinations of Harvard SuperSnap®:

Technique	2 steps / 2 phases Putty-wash technique (Material application successively)	<div><div>phase 1 / step 1</div><div> Putty</div><div></div></div> <div><div>+</div><div><div>phase 2 / step 2</div><div> Light</div><div></div></div></div>
	1 step / 2 phases Sandwich technique (Material application simultaneously)	<div><div>phase 1+2 / 1 step</div><div><div> Putty Soft</div><div>+</div><div> Medium</div></div><div></div><div><div> Heavy</div><div>+</div><div> Medium</div></div></div>
	1 step / 1 phase Monophasetechnique	<div><div>1 phase / 1 step</div><div> Mono</div><div></div></div>



Harvard
SuperSnap®
Impress with
„SPEED”.

Super fast – super comfortable!

Harvard

SuperSnap®

Superhydrophilic vinyl polysiloxane impression material with SuperSnap property

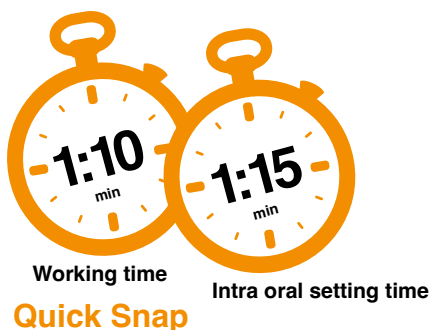
- >> Same convenient working time as Harvard PremiumSil – shortened intra oral setting time
- >> Super hydrophilicity for perfect wettability and excellent reproduction of details
- >> Extremely user- and patient-friendly
- >> Excellent flow properties
- >> High elastic recovery, dimension stability
- >> Intensive colors for excellent legibility
- >> Available in two Snap-Set times: **Regular Snap** and **Quick Snap**
- >> Optimal kneadable consistency for the putty products
- >> Suitable for the sandwich technique and the putty-wash technique
- >> Different viscosities:
Putty, Putty Soft, Heavy, Mono, Medium, Light



Order Details

Regular Snap	Color	
2 automix cartridges ea. 50 ml, 12 mixing tips 1:1, 4 IntraTips yellow		
Light	orange	7083801
Medium	green	7083811
2 automix cartridges ea. 50 ml, 12 mixing tips 1:1		
Mono	blue	7083821
Heavy	black-grey	7083831
2 jars ea. 600 g, 2 spoons		
Putty	black	7083841
Putty Soft	black	7083851
MaxiMix cartridge, 380 ml, 10 dynamic mixers, 1 bayonet ring		
Putty Soft	black	7083853
Heavy	black	7083833
Quick Snap	Color	
2 automix cartridges ea. 50 ml, 12 mixing tips 1:1, 4 IntraTips yellow		
Light	orange	7083802
Medium	green	7083812
2 automix cartridges ea. 50 ml, 12 mixing tips 1:1		
Mono	blue	7083822
Heavy	black-grey	7083832
2 jars ea. 600 g, 2 spoons		
Putty	black	7083842
Putty Soft	black	7083852
MaxiMix cartridge, 380 ml, 10 dynamic mixers, 1 bayonet ring		
Heavy	black-grey	7083834
Harvard Auto-T 1:1 O-Yellow Refill bag with 50 mixing tips for Light, Medium – Regular / Quick		7098000
Harvard Auto-T 1:1 O-Green Refill bag with 50 mixing tips for Heavy – Regular / Quick		7098010
Harvard Auto-T 1:1 O-Pink Refill bag with 50 mixing tips for Mono – Regular / Quick		7098020
Harvard IntraTips yellow Refill bag with 50 mixing tips for Light, Medium – Regular / Quick		7083619
Harvard Maxi 5:1 Dynamic Refill bag with 50 dynamic mixers for Putty Soft MaxiMix Heavy – Regular / Quick MaxiMix		7091400
Harvard Dispenser Automix 1:1		7095100

No stock item, please contact the Harvard sales team.





Harvard PremiumSil

Superhydrophilic vinyl polysiloxane impression material

The recommended combinations of Harvard PremiumSil:

2 steps / 2 phases Putty-wash technique (Material application successively)	 Putty + Light	or	 Putty + Medium
1 step / 2 phases Sandwich technique (Material application simultaneously)	 Putty Soft + Medium	or	 Heavy* + Medium



Harvard

PremiumSil

Superhydrophilic vinyl polysiloxane impression material

- >> Super hydrophilicity for perfect wettability and excellent reproduction of details
- >> Long working time, short intra oral setting time
- >> Excellent flow properties
- >> Optimal kneadable consistency for the putty products
- >> Very low shrinkage
- >> Suitable for the sandwich technique and the putty-wash technique
- >> Two setting times
- >> Durable storage of impression
- >> Different viscosities: Putty, Putty Soft, Heavy, Medium, Light



Order Details

Normal Set	Color	
2 automix cartridges ea. 50 ml, 12 mixing tips 1:1, 4 IntraTips yellow		
Light	orange	7083701
Medium		7083711
4 automix cartridges ea. 50 ml		
Light	orange	7083703
2 automix cartridges ea. 50 ml, 12 mixing tips 1:1		
Heavy	bright purple	7083731
2 jars ea. 600 g, 2 spoons		
Putty	dark purple	7083751
Putty Soft	purple	7083741
MaxiMix cartridge, 380 ml, 10 dynamic mixers, 1 bajonet ring		
Putty Soft	purple	7083740
Fast Set	Color	
2 automix cartridges ea. 50 ml, 12 mixing tips 1:1, 4 IntraTips yellow		
Light Fast	orange	7083702
Medium Fast	bright green	7083712
4 automix cartridges ea. 50 ml		
Light Fast	orange	7083704
2 automix cartridges ea. 50 ml, 12 mixing tips 1:1		
Heavy Fast	bright purple	7083732
2 jars ea. 600 g, 2 spoons		
Putty Fast	dark purple	7083752
Putty Soft Fast	purple	7083742
MaxiMix cartridge, 380 ml, 10 dynamic mixers, 1 bajonet ring		
Heavy Fast	bright purple	7083733
Harvard Auto 1:1 O-Green		7096000
Refill bag with 50 mixing tips for Harvard PremiumSil Heavy / Heavy Fast		
Harvard Auto 1:1 O-Pink		7091200
Refill bag with 50 mixing tips for Harvard PremiumSil Mono / Mono Fast		
Harvard Auto 1:1 O-Yellow		7091300
Refill bag with 50 mixing tips for Harvard PremiumSil Light / Light Fast Harvard PremiumSil Medium / Medium Fast		
Harvard IntraTips yellow		7083619
Refill bag with 50 mixing tips for Harvard PremiumSil Light / Light Fast Harvard PremiumSil Medium / Medium Fast		
Harvard Maxi 5:1 Dynamic		7091400
Refill bag with 50 dynamic mixers for Harvard PremiumSil Putty Soft MaxiMix Harvard PremiumSil Heavy Fast MaxiMix		
Harvard Dispenser Automix 1:1		7095100

No stock item, please contact the Harvard sales team.

Harvard

TraySive

Conventional tray adhesive for silicones

- >> Tray adhesive for all silicone impression materials
- >> Tacky bond between impression tray and A-silicone



Order Details

10 ml bottle	7083753
--------------	---------

Harvard LiquiCord®

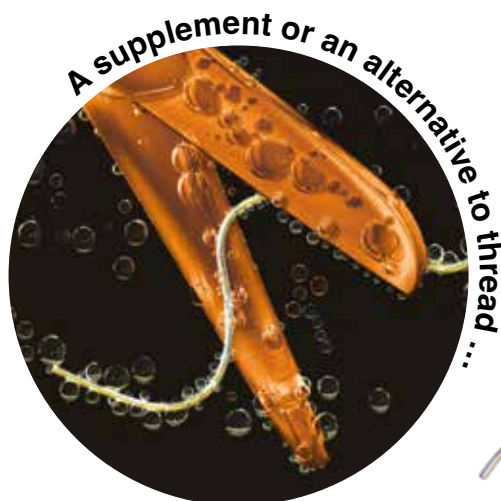
Retraction paste for temporary gingiva displacement

- >> For patients: less painfull
- >> For dentists: time saving, easy to use
- >> For a dry and expanded sulcus
- >> Neutral taste

Order Details

10 x 0.7 g syringe, 20 needle tips 7083870

Harvard NeedleTips H18 white
Refill bag with 50 needle tips 7083875

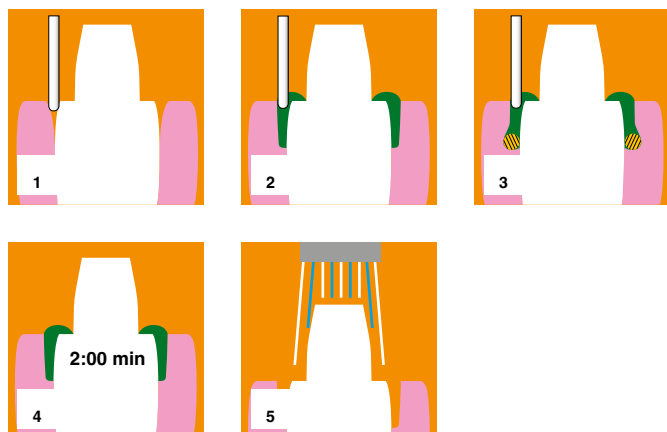


Application of Harvard LiquiCord®

For accurate impressions the gingiva retraction is very important: after a tooth preparation the gingival sulcus normally is filled with saliva, blood or other liquids and therefore not accessible for the impression material. This requires effective retraction with Harvard LiquiCord®. It temporarily displaces the gingiva and keeps the sulcus dry and protected. In addition Harvard LiquiCord® has a hemostatic effect.

Harvard LiquiCord® can be used for all indications of temporary displacement of the marginal gingiva and to provide a dry and expanded sulcus:

- >> For digital impressions
- >> For conventional impressions
- >> Impressions for restorations (temporary and permanent)
- >> Preparations of class II and V



1. Introduce the tip / needle into the sulcus, opening the sulcus
2. Move the top of the tip slowly and evenly around the tooth while pressing out the paste. Fill the sulcus all around with enough Harvard LiquiCord® so that an excess appears
3. If necessary, Harvard LiquiCord® can be used in combination with a retraction cord, that is placed before in the sulcus, to open the sulcus further
4. Let Harvard LiquiCord® work for at least 2 minutes and keep away all moisture during this time
5. After this time flush off Harvard LiquiCord® completely from the sulcus with air and water

Harvard Bite

Bite registration material based on vinyl polysiloxane

- >> Precise and distortion-free
- >> Fast setting (45 sec)
- >> Very low shrinkage
- >> Easy to cut, not brittle
- >> Ideal consistency
- >> Durable storage of bite registrate
- >> Vanilla smell
- >> Neutral taste



Order Details

2 x 50 ml automix cartridge, in the shade Yellow (vanilla smell), 12 mixing tips	7083700
4 x 50 ml automix cartridge, in the shade Yellow (vanilla smell)	7083710
Harvard Auto 1:1 O-Green Refill bag with 50 mixing tips	7096000
Harvard Dispenser Automix 1:1	7095100

Experience the difference.

Kay Zischow, Managing director Zischow Dental Hamburg GmbH

„Harvard Bite has convinced me with its positive properties.“

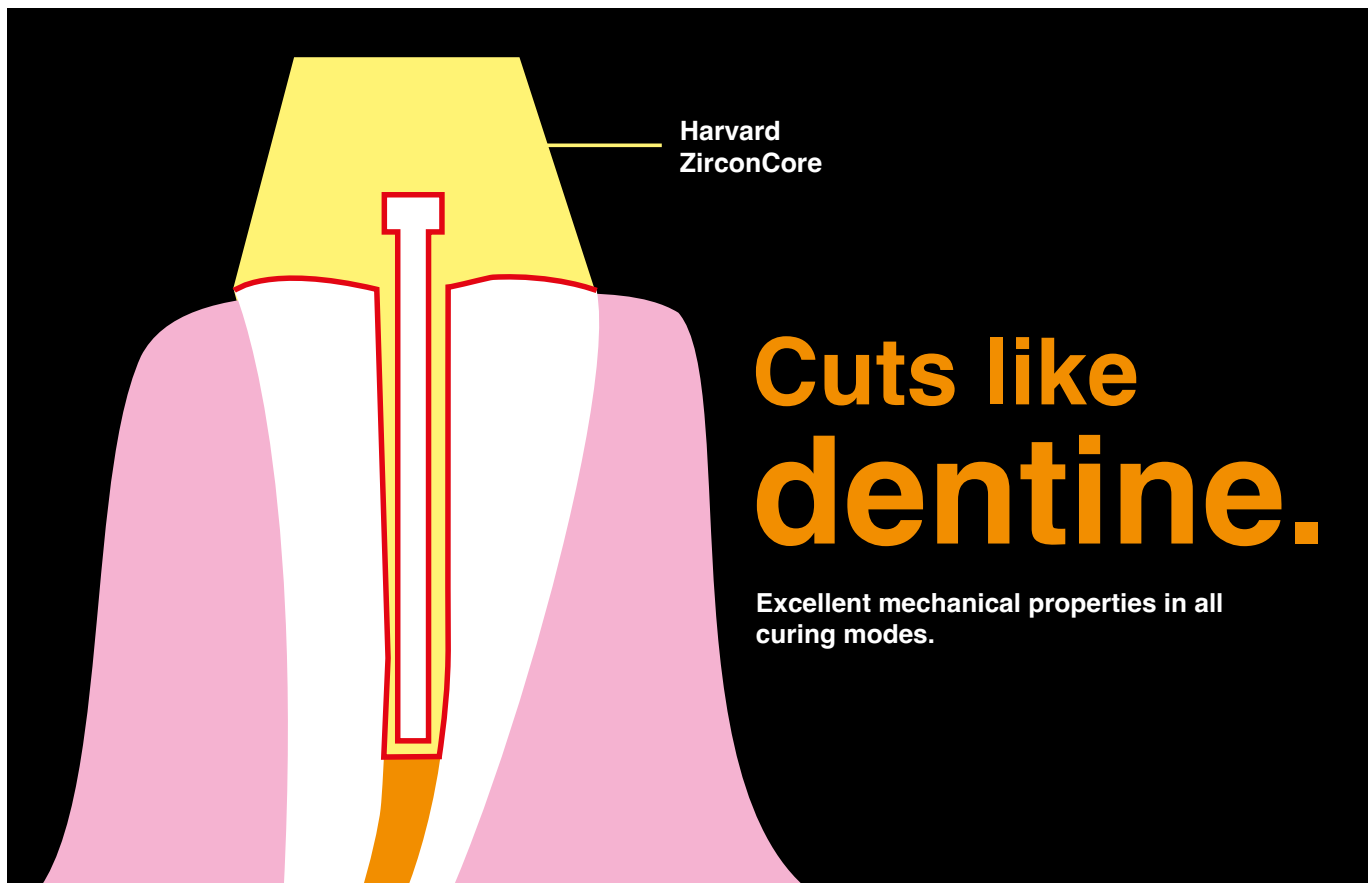
„The advantages of Harvard Bite for CMD registrations are that the material becomes very firm after curing, is very thin-flowing and the bite can thus be ideally fixed in a locked position. I would recommend this material to all dentists and colleagues at any time.“



- 1: Intraoral application of **Harvard Bite**: optimal consistency
- 2: Only 45 seconds cure
- 3: Excellent reproduction of the bite situation
- 4: Bite registration
- 5: Precise trimming and grindability

Core Build-Up & Post Cementation

Prosthetics



Dr. Pawel Paszkiewicz

- 1: Prepared and bonded root canal
- 2: Application into the root canal
- 3: Placing the root post
- 4: Cured core build-up
- 5: Finished core build-up



„Due to the dual indication – post-cementation and core build-up – the work becomes easier, faster and more efficient.“

Harvard

ZirconCore

Dual cure core build-up and post cementation composite

- >> Optimal consistency for two indications: Core build-up and post cementing
- >> „Cuts like dentine“
- >> Very good mechanical properties for durable restorations
- >> Contains substantial amount of nano zirconia particles
- >> Fluoride release
- >> Very good radiopacity
- >> Thixotropic properties
- >> For optimal results: To be used with **Harvard Bond SE Dual**

Order Details

5 ml minimix syringe	
10 mixing tips, 10 intra tips long	
A2	7083599
A3	7083600

25 ml minimix syringe	
10 mixing tips, 10 intra tips	
A3	7083598

Harvard Mini 1:1 O-Brown	7083610
Refill bag with 50 mixing tips	
Harvard IntraTips long	7083620
Refill bag with 50 intra tips long	
Harvard Auto 1:1 O-Yellow	7091300
Refill bag with 50 mixing tips	
Harvard IntraTips yellow	7083619
Refill bag with 50 intra tips	

No stock item, please contact the Harvard sales team.



Harvard

Bond SE Dual

Dual cure self-etch bonding

- >> Etching, priming and bonding after mixing in one step
- >> Only one layer necessary
- >> Strong and long-lasting adhesion to enamel and dentine
- >> Hydrophilic for wet bonding technique
- >> For use with dual cure composites
e.g. **Harvard ZirconCore**
- >> Good price / performance ratio

Order Details

2 x 5 ml bottle	7083602
50 Microbrush®, 5 mixing wells	

Microbrush®	7095156
Refill bag with 50 applicators	





Temporary Crown & Bridge Materials

Prosthetics

Harvard

TEMP C&B Ultra

Semi-permanent crown and bridge material,
ratio 10:1

- >> Highgloss polishability
- >> Perfect shine even without polishing, no additional gloss varnish necessary
- >> Natural esthetics and fluorescence
- >> Reduced smear layer
- >> Very low polymerization temperature
- >> Very high mechanical strength & excellent elasticity
- >> High color stabi

Order Details

50 ml automix cartridge 10:1, 10 mixing tips

A2 7081662

A3 7081663

Harvard Auto 4:1 / 10:1 S-Blue
Refill bag with 50 mixing tips

7094000

Harvard Dispenser Automix 4:1 / 10:1

7095000



Harvard
TEMP C&B Ultra

Gloss? Just wipe!

Simply wipe the smear layer
off – DONE!

Very good lasting high gloss.
Perfect semi-permanent
esthetic results.
Resilient.

Temporary Crown & Bridge Materials

Prosthetics

Harvard

TEMP C&B

Temporary crown and bridge material, ratio 10:1

- >> Reliable and easy to use
- >> Final processing after 5:00 min
- >> Very good fracture resistance and hardness specially for veneers and longer bridge spans
- >> Low polymerization temperature
- >> Natural esthetics and fluorescence
- >> High color stability



50 ml

Order Details

50 ml automix cartridge 10:1, 10 mixing tips	
A1	7081651
A2	7081652
A3	7081653
A3.5	7081654
BL	7081650

Harvard Auto 4:1 / 10:1 S-Blue	7094000
Refill bag with 50 mixing tips	
Harvard Dispenser Automix 4:1 / 10:1	7095000

No stock item, please contact the Harvard sales team.



30 ml

Harvard TEMP Glaze LC

Gloss varnish for temporary crowns and bridges

- >> Highly esthetic and shiny surface without polishing
- >> Ideal for crowns and bridges in the visible area

Order Details

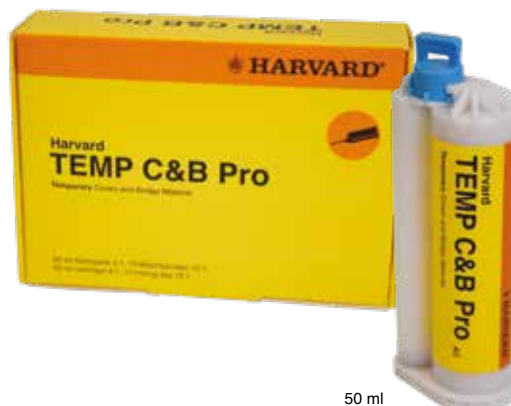
30 ml bottle	7081730
--------------	---------

Harvard

TEMP C&B Pro

Temporary crown and bridge material, ratio 4:1

- >> Reliable and easy to use
- >> Good fracture resistance and hardness
- >> Natural esthetics and fluorescence
- >> Color stability
- >> Good price / performance ratio



50 ml

Order Details

50 ml automix cartridge 4:1, 10 mixing tips A1	7081641
50 ml automix cartridge 4:1, 10 mixing tips A2	7081642
50 ml automix cartridge 4:1, 10 mixing tips A3	7081643

Harvard Auto 4:1 / 10:1 S-Blue	7094000
Refill bag with 50 mixing tips	
Harvard Dispenser Automix 4:1 / 10:1	7095000

No stock item, please contact the Harvard sales team.

Temporary Luting Cements

Prosthetics

Harvard TEMP Cem

Eugenol-free temporary luting cement in a minimix syringe

- >> Optimal adhesion
- >> Easy removal of the temporary
- >> No residual cement on the core
- >> Contains zinc oxide
- >> Excellent flow
- >> Eugenol-free
- >> Easy removal of excess material



Order Details

5 ml minimix syringe, 10 mixing tips	7081100
10 ml minimix syringe, 20 mixing tips	7081200
Harvard Mini 1:1 S-Brown Refill bag with 50 mixing tips	7091050

Dentist Dr. Oxana Hilfer

„Harvard TEMP Cem saves precious working time and keeps patients happy.“

„Harvard TEMP Cem is a temporary cement of the latest generation. The minimix syringe saves valuable working time and is easy to use. Depending on the application, the cement can hold the restoration reliably for several days to several months. Excess can be easily removed and cleaned without leaving any residue. **I save valuable working time and my patients are very satisfied.**“

- 1: Preparation
- 2: Crown fixation with **Harvard TEMP Cem**
- 3: Removal of excess material
- 4: Temporary



Harvard TEMP Cem EasyDose®

Eugenol-free temporary luting cement in a dosing syringe

- >> Handmix – more economic
- >> Optimal adhesion
- >> Easy removal of the temporary
- >> No residual cement on the core
- >> Contains zinc oxide
- >> Excellent flow behavior
- >> Eugenol-free
- >> Easy removal of excess



Order Details

10 ml EasyDose® syringe	7081103
-------------------------	---------

Temporary Luting Cements

Prosthetics

Harvard

TEMP Cem Esthetic

Translucent zinc oxide cement for temporary luting

- >> Translucent and esthetic material
- >> Easy removal of excess material
- >> Easy removal of the restoration
- >> No residual cement on the core
- >> Eugenol-free

Order Details

5 ml minimix syringe, 10 mixing tips	7081104
Harvard Mini 1:1 S-Brown Refill bag with 50 mixing tips	7091050



Semi-permanent Luting Cement

Prosthetics

Harvard

Implant Semi-permanent

Dual cure composite cement for semi-permanent cementation of implant based crowns and bridges

- >> Safe fixation, easy removal, easy re-cementation
- >> Elastic polymer film to minimize chewing pressure on the bone
- >> Excellent sealing, no shrinkage
- >> Easy removal of the crown
- >> Easy removal of excess material
- >> Contains zinc oxide

Order Details

5 ml minimix syringe, 10 mixing tips	7081400
Harvard Mini 4:1 / 10:1 S-Brown Refill bag with 50 mixing tips	7093050



Dentist Dr. Oxana Hilfer

„The safe, semi-permanent cementation.“

„Harvard Implant Semi-permanent allows by the self-mixing minimix syringe an exact dosage of needed amount of cement. Excess material can be removed effortlessly and completely after a short light curing with LED light. Even bigger restorations can be easily removed at any time. Long and cumbersome trimming after removing is avoided.“

Harvard LuteCem SE

Self-adhesive dual cure resin-modified luting cement

- >> Suitable for:
 1. Luting of posts made of fiber-reinforced materials, metal and ceramics
 2. Luting of crowns and bridges made of ceramics, zirconia, composites and metal
- >> Dual cure
- >> Fluoride release
- >> High color stability



Order Details

5 ml minimix syringe,	
10 mixing tips Harvard Mini 4:1 / 10:1 S-Brown	
5 mixing tips Harvard Mini 4:1 / 10:1 O-Brown	
5 intra tips long	
Translucent	7081101
A2	7081105
White opaque	7081107

Harvard Mini 4:1 / 10:1 S-Brown	7093050
Refill bag with 50 mixing tips	
Harvard Mini 4:1 / 10:1 O-Brown	7091100
Refill bag with 50 mixing tips	
Harvard IntraTips long	7083620
Refill bag with 50 intra tips	

No stock item, please contact the Harvard sales team.

Harvard VeneerCem

Shade-adaptive, light cure composite cement for the cementation of translucent veneers

- >> Shade-adaptive – for a good adaption to the existing restoration
- >> Precise application
- >> Easy excess removal
- >> Permanent result
- >> Very high polishability
- >> Natural fluorescence
- >> No try-in paste required (time saving)
- >> High color stability



Order Details

2 x 1 ml syringe, incl. 8 needle tips H18	7100020
Harvard NeedleTips H18	7095158
Refill bag with 50 needle tips	

Dr. Amir Ibrik D.D.S, N.D.B, E.R.B, MSc

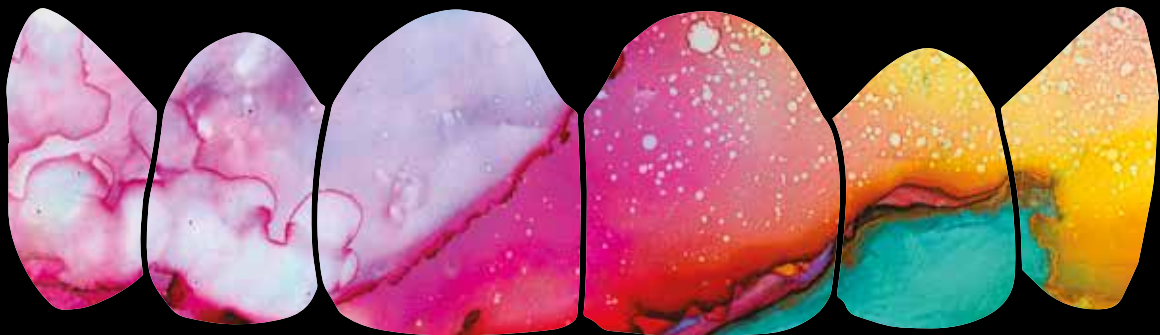
„Simple logistics – no more headache!“

A very nice and convenient veneer cement. What is different in this cement to others? **Harvard Veneer Cem** is adapting the shade between veneer and tooth automatically. Thanks to Harvard with its hyper-nanotechnology spherical fillers we cemented different shade porcelain veneers with only one shade.





Harvard VeneerCem



Dr. Mohammed Saqqal



„Mastering a major challenge with the best material: Harvard VeneerCem.“



Clinical case tooth 12 and 22

„A patient came to me complaining about the appearance of his smile due to a gap in his upper incisors. I decided to fabricate ceramic veneers made of highly translucent lithium disilicate that had the same color and layering as his natural teeth.“

The biggest challenge was to match these veneers perfectly to the neighboring teeth.“





Harvard
POWERmer Cem

Harvard
BioPOWER Cem

Harvard
BioPhosphate Cem

Harvard

POWERmer Cem

High strength, self adhesive, dual cure composite-hybrid for Luting of crowns and bridges, inlays, onlays and veneers

- >> **Stress-bearing**
- >> **Good adhesion** to tooth, zirconia and metal
- >> No shrinkage
- >> **No adhesive necessary!**
- >> **Fluoride release**
- >> Acid neutralisation ability
- >> Insoluble
- >> **Translucent**
- >> Color stable
- >> In strength, esthetics and polish: **LIKE A LUTING COMPOSITE CEMENT!**
- >> Radiopaque
- >> HandMix or OptiCaps®

Order Details

50 OptiCaps® ea. 0.5 g, ea. packed in aluminum pouch Universal	7071320
--	---------

10 OptiCaps® ea. 0.5 g, ea. packed in aluminum pouch Universal	7071321
--	---------

15 g powder / 7 ml liquid, dosage spoon, mixing pad Universal	7071322
---	---------

Harvard Applier OptiCaps®	7092000
---------------------------	---------

Resin-
Reinforced



0.5 g



7 ml

15 g



Harvard **POWERmer Cem** is an **translucent esthetic** composite-hybrid luting cement with high fluoride release. In addition, the material can be light-cured on the edge of the crown or bridge to enable quick primary fixing.

The high compressive strength, good adhesion and an acid neutralisation ability ensure long-lasting results. **Harvard POWERmer Cem** has no shrinkage and is self-adhesive, to tooth, zirconia and metal.

Harvard BioPOWER Cem

Bioactive, dual cure MTA-modified composite-hybrid for luting of crowns and bridges

- >> High pH 12
- >> Calcium release
- >> Fluoride release
- >> Bioactive
- >> Dual cure
- >> No shrinkage
- >> No adhesive necessary!
- >> Good adhesion to tooth, zirconia and metal
- >> Strong
- >> Opaque
- >> Radiopaque
- >> HandMix or OptiCaps®

Order Details

10 OptiCaps® ea. 0.5 g,
ea. packed in aluminum pouch
Universal 7071420

5 g powder / 3 ml liquid,
dosage spoon, mixing pad
Universal 7071421

Harvard Applier OptiCaps® 7092000

**Resin-
Reinforced**



Harvard BioPOWER Cem is an composite-hybrid cement with calcium and fluoride release. In addition, the material can be light-cured on the edge of the crown or bridge to enable quick primary fixing.

The high compressive strength and a bacteriophobic environment, thanks to a high pH value of 12, ensure long-lasting results. **Harvard BioPOWER Cem** has no shrinkage and is self-adhesive, to tooth, zirconia and metal.

Harvard

BioPhosphate Cem

Bioactive, self cure MTA zinc phosphate cement for luting of crowns and bridges

- >> High pH 12
- >> Calcium release
- >> Bioactive
- >> Self cure
- >> No shrinkage
- >> Self-adhesive
- >> Good adhesion to tooth, zirconia and metal
- >> No adhesive necessary!
- >> Very low solubility
- >> Strong
- >> Opaque
- >> Radiopaque
- >> HandMix

Order Details

5 g powder / 2,5 ml liquid,
dosage spoon, mixing pad
Universal

7071520

Resin-
Free



Harvard BioPhosphate Cem is an opaque luting cement based on MTA zinc phosphate cement with calcium release.

The reaction of MTA and phosphoric acid is mostly described to lead to calcium phosphate compounds e.g. **apatite**.

The high compressive strength and a bacteriophobic environment, thanks to a high pH value of 12, ensure long-lasting results. **Harvard BioPhosphate Cem** has no shrinkage and is self-adhesive, to tooth, zirconia and metal.

Harvard IonoResin Cem Extra (LC)

Esthetic light and self cure resin-reinforced glass ionomer cement for luting of crowns and bridges, inlays, onlays and as a liner under composite fillings (with additional light curing)

- >> Good esthetics
- >> Low film thickness
- >> Practically insoluble
- >> Improved mechanical properties
- >> Very low shrinkage
- >> Set on demand by three types of curing:
self + light cure + classical cement reaction
- >> Radiopaque
- >> HandMix or OptiCaps®



Order Details

15 g powder, Universal / 10 ml liquid dosage spoon	7061116
50 OptiCaps® ea. 0.4 g, Universal	7061251
Harvard Applier OptiCaps®	7092000

No stock item, please contact the Harvard sales team.

Resin-Reinforced

Harvard IonoResin Cem (LC)

Self cure resin-reinforced glass ionomer cement for luting crowns and bridges (with additional light curing)

- >> Radiopaque
- >> Moisture tolerant
- >> Easy to mix and convenient to apply
- >> Good marginal fit and seal
- >> Practically insoluble
- >> In clinical situations close to the pulp use **Harvard BioCal®-Line** (see also page 24)
- >> HandMix
- >> Good price / performance ratio



Order Details

15 g powder, Universal / 10 ml liquid dosage spoon	7041216
--	---------

No stock item, please contact the Harvard sales team.

Harvard IonoGlas Cem Extra

Classical self cure glass ionomer cement for luting of crowns and bridges, metal based inlays, onlays and as a liner under composite fillings

- >> Good esthetics
- >> Radiopaque
- >> Low solubility
- >> Good adhesion to enamel and dentine
- >> High fluoride release
- >> Biocompatible
- >> HandMix or OptiCaps®

Order Details

15 g powder, Universal / 10 ml liquid dosage spoon	7042115
50 OptiCaps® ea. 0.4 g – Universal	7042250
Harvard Applier OptiCaps®	7092000

No stock item, please contact the Harvard sales team.



Resin-Free

Harvard IonoGlas Cem

Classical self cure conventional glass ionomer cement for luting of crowns and bridges

- >> Good adhesion to dentine and enamel
- >> Fluoride release, biocompatible and radiopaque
- >> Easy to mix and to use
- >> Good marginal fit and seal
- >> HandMix
- >> Good price / performance ratio

Order Details

15 g powder, Universal / 10 ml liquid dosage spoon	7041115
35 g powder, White / 20 ml liquid dosage spoon	7041130
35 g powder, Universal / 20 ml liquid dosage spoon	7041135

No stock item, please contact the Harvard sales team.



Harvard Cement

The Original. Since 1892.



The cement. Timeless and contemporary.
Harvard Cement stands
for a long and successful history.
In addition, Harvard the cement inventor has
developed into a dental
specialist in almost all areas.
See for yourself ...

Harvard Cement

Zinc phosphate cement for permanent luting of restorations and for lining.
The classic – well-proven since 1892.

- >> High compressive strength and low film thickness
- >> Good biocompatibility
- >> Easy and safe application
- >> Unmatched price / performance ratio for luting and lining materials
- >> Applicable for:
 - >> Zircon oxide
 - >> Silicate ceramic
 - >> Aluminium oxide
 - >> Gold and non precious-metals
- >> Cement according to DIN EN ISO 9917-1
- >> Available in two setting times: normal and fast setting
- >> Well-proven since 1892

(Mixing advice see page 86)

Also available in OptiCaps®

- >> For permanent luting of crowns and bridges
- >> Quantity for 1 to 2 crowns
- >> Mixing time: 10 sec
- >> Working time: 1:30 min from start of mixing



Order Details

Harvard Cement normal setting

Powder Shade	Single powder 35 g	Clinic powder 100 g
1 - White	7002501	7002201
2 - Bluish white		7002202
3 - Yellowish white	7002503	7002203
4 - Light yellow	7002504	7002204
5 - Yellow		7002205
Liquid	Single liquid 15 ml	Clinic liquid 40 ml
	7002600	7002300

Harvard Cement quick setting

Powder Shade	Single powder 35 g	Clinic powder 100 g
1 - White	7001501	7001201
2 - Bluish white		7001202
3 - Yellowish white	7001503	7001203
4 - Light yellow		7001204
5 - Yellow		7001205
Liquid	Single liquid 15 ml	Clinic liquid 40 ml
	7001600	7001300

10 OptiCaps® ea. 0.5 g, Shade 3 - Yellowish white ea. packed in aluminum pouch	7081310
50 OptiCaps® ea. 0.5 g, Shade 3 - Yellowish white ea. packed in aluminum pouch	7081350

Harvard Applier OptiCaps®	7092000
---------------------------	---------

Harvard Polycarboxylat Cement

Zinc polycarboxylate cement for permanent luting and lining

- >> Non-irritant for sensitive teeth
- >> Cement according to DIN EN ISO 9917-1
- >> Easy and safe application
- >> Unmatched price / performance ratio for luting materials

(Mixing advice see page 86)



Order Details

Powder Shade	Single powder 35 g	Clinic powder 100 g
3 - Yellowish white	7031503	7031203
4 - Light yellow	7031504	7031204
Liquid	Single liquid 15 ml	Clinic liquid 40 ml
	7031600	7031300

Transparent Matrix Material

Prosthetics

Harvard TransMatrix

Transparent matrix and bite registration material based on vinyl polysiloxane

- >> Transparent to allow perfect light cure of composite through the matrix
- >> Appropriate final hardness and good detail reproduction
- >> Original shape remains unaltered
- >> Dimensionally stable over time and after disinfection
- >> Perfect consistency and thixotropy
- >> Fast setting time (1:20 min in mouth)
- >> Comfortable for the patient with neutral taste and flavor
- >> Time-saving – direct application in the mouth
- >> Also usable as transparent bite registration material

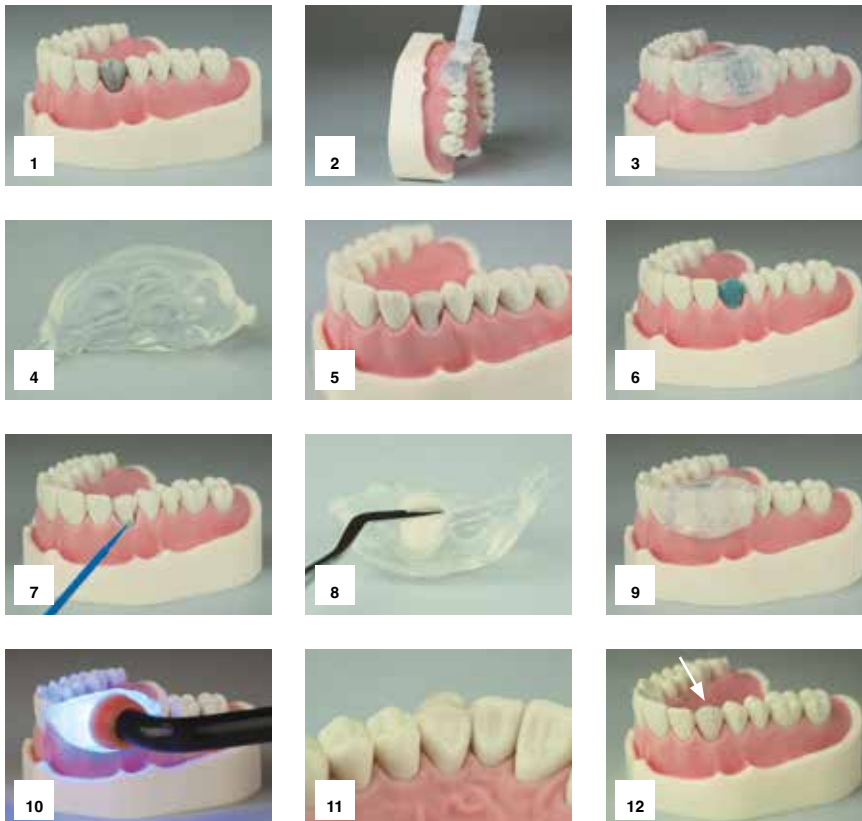
Order Details

2 x 50 ml automix cartridge, shade transparent, 12 mixing tips	7083798
Harvard Auto 1:1 O-Green Refill bag with 50 mixing tips	7096000
Harvard Dispenser Automix 1:1	7095100



Dr. Amir Ibrik D.D.S, N.D.B, E.R.B, MSc

„Easy application of Harvard TransMatrix.“



- 1: Initial situation
- 2: Application of Harvard TransMatrix to the surface to be prepared and adjacent teeth
- 3: Fast curing time (1:20 min intraorally)
- 4: Complete matrix
- 5: Tooth preparation
- 6: Etching of the prepared surface with **Harvard Etch**
- 7: Application of adhesive system, e.g. **Harvard InterLock ONE**
- 8: Application of a moldable composite into the matrix, e.g. **Harvard UltraFill**
- 9: Correct repositioning of the filled matrix into the oral cavity
- 10: 40 sec light curing through the matrix, repeat the procedure after removing the matrix
- 11: Excess removal and polishing with suitable rotary instruments and, if necessary, finishing strip
- 12: **Finished direct composite restoration**

Harvard ClearMatrix

Crystal-clear matrix material based on vinyl polysiloxane

- >> Very high transparency, allows perfect light cure of composite through the matrix
- >> Optimal flow behavior
- >> High tear resistance and stability with simultaneous flexibility
- >> Time saving for veneers created using the chariside technique
- >> Working time: 45 seconds
- >> Setting time in the mouth: approx. 2 minutes
- >> Especially suitable for:
 - >> Injection molding technique
 - >> Temporary crowns and bridges
 - >> Composite layering technique
- >> Dimensionally stable over time and after disinfection

Order Details

2 x 50 ml automix cartridge, 12 mixing tips	7083799
Harvard Auto 1:1 O-Green Refill bag with 50 mixing tips	7096000
Harvard Dispenser Automix 1:1	7095100



The crystal-clear view of Harvard ClearMatrix ensures easy visual control. In addition, the material allows for very good light curing through the silicone.

Harvard ClearMatrix adapts perfectly to the structure of the tooth surface, perfectly reproducing every detail.

The material can be easily cut, and is perfect for the injection technique.



Accessories and More.





Harvard NeedleTips H18	7095158
with 50 needle tips for Harvard MultiChrome Flow, Harvard UltraFill Flow, Harvard PremiumFlow, Harvard IonoSphere Bulk Flow, Harvard CalciumHydroxide LC	
Harvard NeedleTips H18 white	7083875
with 50 needle tips for Harvard LiquiCord®	
Harvard NeedleTips H20	7091226
with 50 needle tips for Harvard IonoLine, Harvard RestoreFlow	
Harvard NeedleTips H22	7095162
with 50 needle tips for Harvard BioCal®-CAP, Harvard BioCal®-Line	
Harvard NeedleTips H25	7095126
with 50 needle tips for Harvard Etch	
Harvard Microbrush®	7095156
with 50 applicators for Harvard InterLock® ONE, Harvard InterLock®, Harvard Bond SE Mono, Harvard Restore System Kit, Harvard Bond SE Dual	
Harvard Auto-T 1:1 O-Yellow	7098000
with 50 mixing tips for SuperSnap® Light, Medium, Regular / Quick	
Harvard Auto-T 1:1 O-Green	7098010
with 50 mixing tips for SuperSnap® Heavy Regular / Quick	
Harvard Auto-T 1:1 O-Pink	7098020
with 50 mixing tips for SuperSnap® Mono, Regular / Quick	
Harvard IntraTips yellow	7083619
with 50 intra tips for Harvard PremiumSil Light, SuperSnap®, Light Fast, Medium, Medium Fast, Harvard ZirconCore 25 ml	
Harvard IntraTips long	7083620
with 50 intra tips long for Harvard Core, Harvard ZirconCore, Harvard LuteCem SE, Harvard BioCal®-RootSeal, Harvard BioCal®-Cem	
Harvard Mini 1:1 O-Brown	7083610
with 50 mixing tips for Harvard Core, Harvard ZirconCore	
Harvard Mini 4:1 / 10:1 O-Brown	7091100
with 50 mixing tips for Harvard LuteCem SE, Harvard BioCal®-RootSeal, Harvard BioCal®-Cem	
Harvard Mini 4:1 / 10:1 S-Brown	7093050
with 50 mixing tips for Harvard LuteCem SE, Harvard Implant Semi-permanent, Harvard BioCal®-RootSeal plus EndoDirect, Harvard BioCal®-RootSeal, Harvard BioCal®-Cem	
Harvard Mini 1:1 S-Brown	7091050
with 50 mixing tips for Harvard TEMP Cem Esthetic, Harvard TEMP Cem	
Harvard Auto 4:1 / 10:1 S-Blue	7094000
with 50 mixing tips for Harvard TEMP C&B, Harvard TEMP C&B Pro	
Harvard Auto 1:1 O-Green	7096000
with 50 mixing tips for Harvard Bite, Harvard ClearMatrix, Harvard TransMatrix, Harvard PremiumSil Heavy / Heavy Fast	
Harvard Auto 1:1 O-Pink	7091200
with 50 mixing tips for Harvard PremiumSil Mono / Mono Fast	
Harvard Auto 1:1 O-Yellow	7091300
with 50 mixing tips for Harvard PremiumSil Light / Light Fast, Harvard PremiumSil Medium / Medium Fast, Harvard ZirconCore 25 ml	
Harvard Maxi 5:1 Dynamic	7091400
with 50 dynamic mixers for Harvard PremiumSil and Harvard SuperSnap®, Putty Soft MaxiMix, Heavy Fast MaxiMix	
Harvard Endo Tips	7083618
with 25 endo tips for Harvard RootTemp	
Harvard Applier OptiCaps®	7092000
for all OptiCaps®	
Harvard Applier OptiTips®	7095200
for all OptiTips® and ComforTips®s	
Harvard Dispenser Automix 4:1 / 10:1	7095000
for Harvard TEMP C&B, Harvard TEMP C&B Pro	
Harvard Dispenser Automix 1:1	7095100
for Harvard Bite, Harvard TransMatrix, Harvard PremiumSil and Harvard SuperSnap®, Light / Light Fast, Medium / Medium Fast, Heavy / Heavy Fast, Mono / Mono Fast	
Harvard Dispenser Automix 1:1 / 2:1	7095600
for Harvard ZirconCore 25 ml	



7092000



7095200



7095000



7095100



7095600



Mixing Advices

Miscellaneous



For Harvard Cement, Harvard BioPhosphate Cem & Harvard BioPhosphate Dentine



1

Tip:
Use a cold glass plate,
especially in warm
countries/regions.

Dispense powder and liquid onto a clean and dry glass plate (at approx 23 °C (73 °F)).



2

Divide into 4 portions as follows: 1/2, 1/4, 1/8, 1/8.



3

Mixing: start first 1/8 with the whole liquid quartely within 15 seconds.



4

Add second 1/8 and mix for 15 seconds while spreading.



5

Draw 1/4 into the mixture.



6

Mix while pressing with flat spatula in the next 30 seconds.



7

Quickly mix the remaining half with the previously mixed amount for a further 30 seconds to form a homogeneous mass.



8

Use the entire surface of the glass plate.



9

Ready-for-use cement mix within 90 seconds.

Harvard Cement normal setting:

For luting consistency: powder 1.5 g, liquid 1.0 g
For cavity lining consistency: powder 2.1 g, liquid 1.0 g

Harvard Cement quick setting:

For luting consistency: powder 1.8 g, liquid 1.0 g

For Harvard Polycarboxylat Cement

For mixing of polycarboxylate cement the whole amount of powder is divided into two equal halves. One half is further divided into two equal parts (quarter).

In 30 seconds mix one half of the powder into the liquid. Then the other two quarters are mixed in for another 15 seconds each. This will result in a total mixing time of 60 seconds.

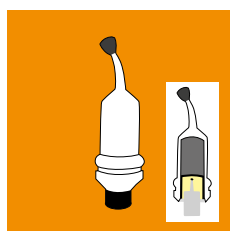
The mixing ratio (by weight) of powder to liquid is 2.9 : 1 (luting cement) or 3.6 : 1 (liner).

Activating and mixing OptiCaps®

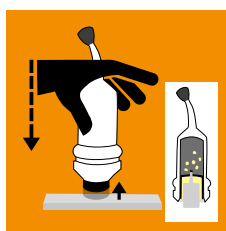
Miscellaneous

“Click before you mix!”

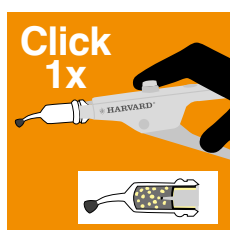
Remove capsule (OptiCaps®) from the pouch



1. OptiCaps® before activation.

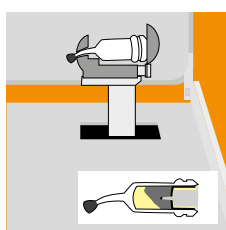


2. For activation of the OptiCaps® press the plunger on a hard and plain surface to the end into the OptiCaps®.

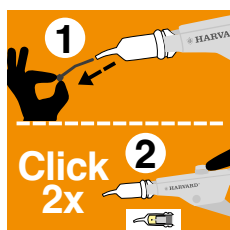


3. Insert the OptiCaps® into the Harvard Applier OptiCaps® and click once to standardize.

Note: The plunger must be at the same level as the bottom of the capsule.

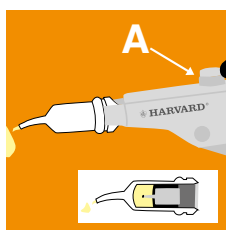


4. Insert the OptiCaps® into a mixer, close lid and mix immediately for the period mentioned in the instructions for use (with about 4300 oscillations / min).



5. Insert the OptiCaps® into the Harvard Applier OptiCaps®. Remove the pin from the nozzle. If not, capsule can burst.

Pull the lever twice (2 clicks) to prime the OptiCaps®.



6. Extrude the mixed material on a glass plate or apply directly. Unlock the gun (push button A) and remove the OptiCaps®.

Only with the Harvard Applier OptiCaps® (Order-No. 7092000) the optimal amount of mixed material is guaranteed.

For the selection of a suitable capsule mixer, our sales and marketing colleagues are gladly available to you.

Mixing & working times of various Harvard OptiCaps® products.

Product	Mixing time	Working time*	Next clinical step	page
Harvard POWERmer Bulk	10 sec	1:00 min	n/a	28
Harvard BioPOWER Dentine	30 sec	1:30 min	n/a	30
Harvard IonoGlas Fill Extra	10 sec	1:30 min	n/a	34
Harvard IonoResin Fill Extra	10 sec	1:30 min	n/a	35
Harvard MTA-CAP	30 sec	2:00 min	3:00 min	38
Harvard MTA-PT	30 sec	2:00 min	3:00 min	39
Harvard Universal	30 sec	2:00 min	5:00 min	45
Harvard MTA-Repair	30 sec	2:00 min	5:00 min	47
Harvard MTA-Ortho	30 sec	4:00 min	10:00 min	47
Harvard MTA-Retro	30 sec	2:00 min	3:00 min	48
Harvard MTA-Root-Seal	30 sec	>10:00 min	60:00 min	55
Harvard POWERmer Cem	10 sec	2:00 min	n/a	75
Harvard BioPOWER Cem	30 sec	2:00 min	n/a	76
Harvard IonoResin Cem Extra	10 sec	2:00 min	n/a	78
Harvard IonoGlas Cem Extra	10 sec	1:30 min	n/a	79
Harvard Cement	10 sec	1:30 min	n/a	81

* from the start of mixing at 23 °C (73 °F)



HARVARD®

Much more
than you
expect.

Harvard Distributions Partner.